



Price

£274,950

Freehold

2x  2x  1x 

**The Belmont, Fontwell
Meadows, Fontwell
Avenue, Fontwell,
Arundel, West Sussex,**

OVER 60?

Secure this property
for up to **59% less!**

cubitt&west
Helping you move forwards



Main features

- New build coach house with integral carport
- Open plan interiors finished to a high standard
- Located on desirable development
- Boasts built in wardrobes for all your storage needs
- Bedroom 1 boasts and en suite

Accommodation

GROUND FLOOR

Carport
Entrance Hall

FIRST FLOOR

First Floor Landing

Lounge/ Kitchen/ Dining Area: 20'0 x 13'2 (6.10m x 4.02m)

Bedroom 1: 14'0 x 10'4 (4.27m x 3.15m)

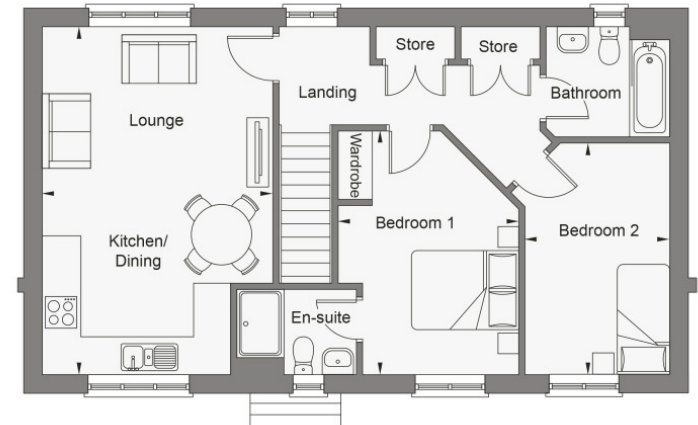
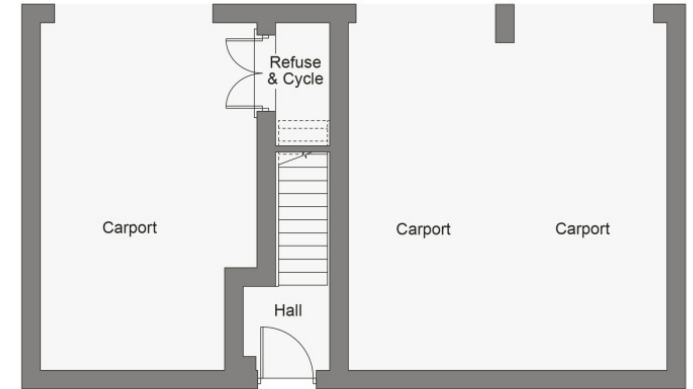
En Suite

Bedroom 2: 13'4 x 8'4 (4.07m x 2.54m)

Bathroom

OUTSIDE

Parking Space
Front Garden



Call Arundel - 01903 884420 ■ cubittandwest.co.uk

- If buying to let, the energy rating will need to be improved to at least 'E' rating before you can let the property
- Legal advice should be taken to verify fixtures/fittings, planning, alterations and/or lease details
- Appliances & services are untested, dimensions are approximate and floor plans are not to scale
- Through a Homewise Home For Life Plan people aged 60+ can secure this property for up to 59% less, by purchasing a Lifetime Lease.



23217681/20231113/IB/DW