

**OVER 60?**

Secure this property  
for up to **59% less!**



**Price**

**£189,000**

**Leasehold**

2x  1x  1x 

Saxby Court, Saxby Close, Barnham, West

Sussex, PO22

**cubitt&west**  
Helping you move forwards





## Main features

- Generously sized first floor apartment
- Light and spacious lounge/dining room with attractive modern kitchen attached
- Large hallway with storage cupboard, plenty of space for bike or pram
- Large communal gardens with space for children to play
- Located in desirable village, excellent for commuting with main line train station
- Lease extension on purchase

## Accommodation

### FIRST FLOOR

Entrance Hall

Lounge/ Dining Room : 14'3 x 13'6 (4.35m x 4.12m)

Kitchen : 10'8 x 6'2 (3.25m x 1.88m)

Bedroom 1: 13'10 x 9'3 (4.22m x 2.82m)

Bedroom 2: 9'11 x 9'5 (3.02m x 2.87m)

Bathroom

### OUTSIDE

Communal Garden

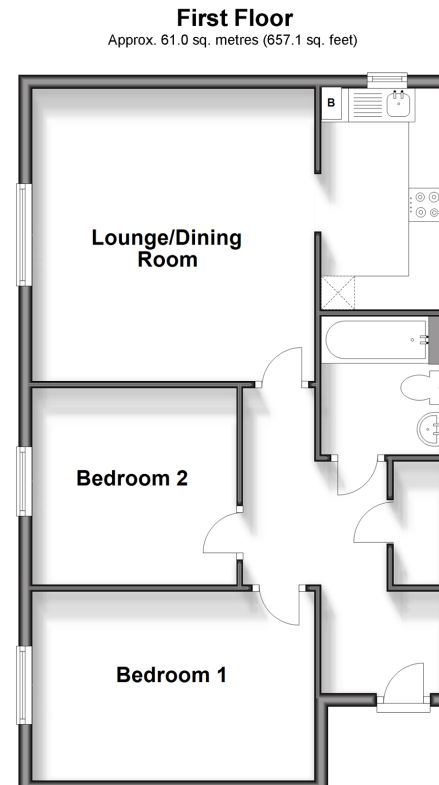
Allocated Parking

Visitors Parking

**Call Arundel - 01903 884420 ■ cubittandwest.co.uk**

■ Legal advice should be taken to verify fixtures/fittings, planning, alterations and/or lease details  
 ■ Through a Homewise Home For Life Plan people aged 60+ can secure this property for up to 59% less, by purchasing a Lifetime Lease.

■ Appliances & services are untested, dimensions are approximate and floor plans are not to scale



23217701/20240508/RH/DW