



Price

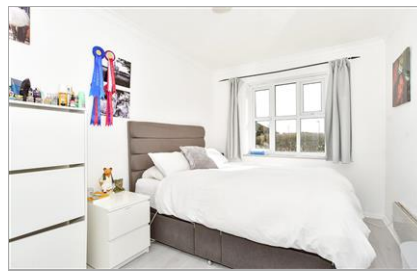
£180,000

Leasehold

1x  1x  1x 

**Sproule Close, Ford,
Arundel, West Sussex
BN18**

cubitt&west
Helping you move forwards



Main features

- Good sized ground floor flat with allocated parking and access to shared garden
- Light and airy rooms throughout
- Recently redecorated with modern kitchen and bathroom
- Situated in peaceful road close to the historic Ford Airfield
- Low service charge & long lease in place

Accommodation

GROUND FLOOR

Hallway

Lounge: 13'8 x 9'9 (4.17m x 2.97m)

Kitchen: 10'1 x 6'6 (3.08m x 1.98m)

Bedroom : 13'9 x 8'9 (4.19m x 2.67m)

Bathroom: 6'9 x 5'0 (2.06m x 1.53m)

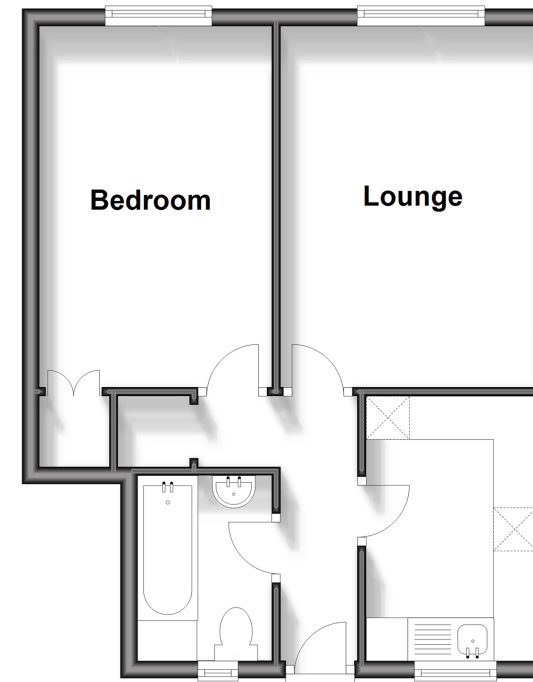
OUTSIDE

Communal Garden

Allocated Parking

Ground Floor

Approx. 39.9 sq. metres (429.4 sq. feet)



Call Arundel - 01903 884420 ■ cubittandwest.co.uk

■ Legal advice should be taken to verify fixtures/fittings, planning, alterations and/or lease details

■ Appliances & services are untested, dimensions are approximate and floor plans are not to scale



23217754/20240318/IB/DW