



Guide Price
£400,000

Leasehold

3x  2x  1x 

**Old Poor House
Cottages, Mount
Pleasant, Arundel, West
Sussex BN18**

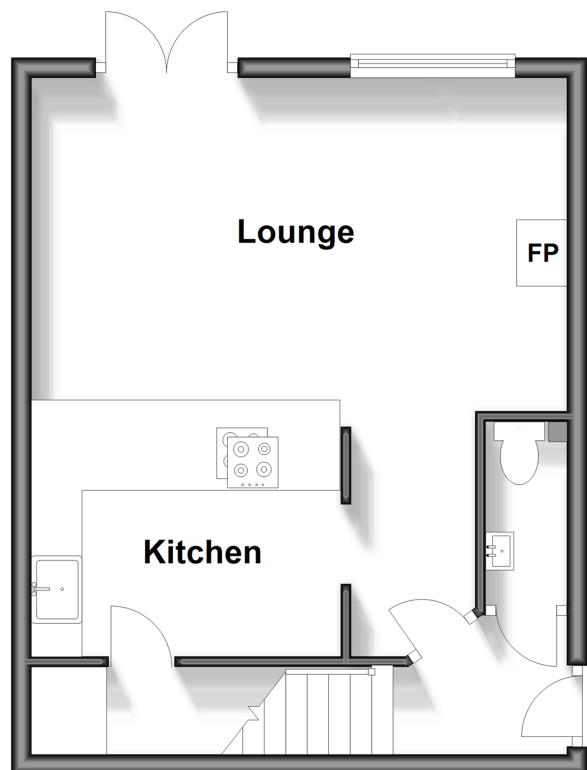
OVER 60?

Secure this property
for up to **59% less!**

cubitt&west
Helping you move forwards

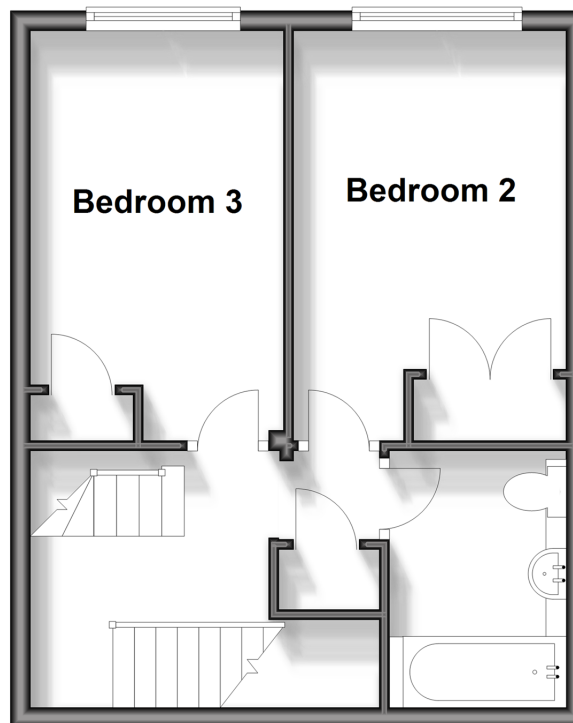
Ground Floor

Approx. 35.2 sq. metres (379.4 sq. feet)



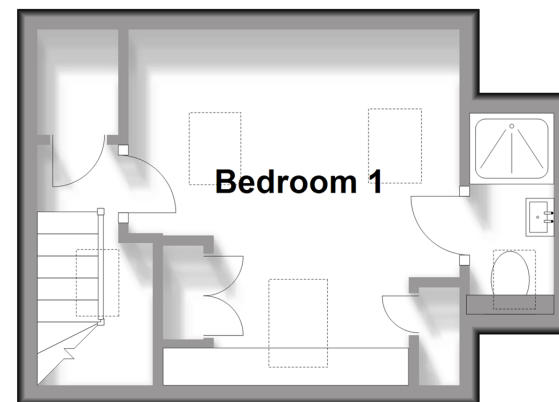
First Floor

Approx. 35.2 sq. metres (379.4 sq. feet)



Second Floor

Approx. 16.5 sq. metres (177.2 sq. feet)



Accommodation

GROUND FLOOR

Entrance Hall
Cloakroom
Lounge/ Diner: 17'4 x 11'7 (5.29m x 3.53m)
Kitchen : 8'0 x 7'1 (2.44m x 2.16m)

FIRST FLOOR

First Floor Landing
Bedroom 3: 13'2 x 8'1 (4.02m x 2.47m)
Bedroom 2: 13'5 x 8'6 (4.09m x 2.59m)
Bathroom : 8'0 x 5'5 (2.44m x 1.65m)

SECOND FLOOR

Second Floor Landing
Main Bedroom : 10'9 x 10'9 (3.28m x 3.28m)
En Suite Shower Room : 5'11 x 2'6 (1.80m x 0.76m)

OUTSIDE

Carport
Private Rear Garden



Main features

- Attractive Sussex Flint Grade II listed cottage
- Open plan living and dining space with cosy log burner & doors opening to private courtyard
- Picturesque views across the Cathedral
- Private covered parking pace and visitors parking
- Located a short walk from bustling historic town centre



Nearest Schools

Primary Schools: St Philip's Catholic Primary, Arundel 0.1 miles, Arundel CofE Primary 0.8 miles, Summerlea Community Primary 3.1 miles

Secondary Schools: Cornfield School, Littlehampton 4.0



Transport Information

Train Stations: Arundel 1.2 miles, Ford 2.0 miles, Angmering 4.0 miles



Address

Old Poor House Cottages, Mount Pleasant, Arundel, West Sussex BN18



Directions

For directions to this property please contact us.



cubitt&west
Helping you move forwards

Call Arundel Branch 01903 884420 ■ cubittandwest.co.uk



- Legal advice should be taken to verify fixtures/fittings, planning, alterations and/or lease details
- Appliances & services are untested, dimensions are approximate and floor plans are not to scale
- Through a Homewise Home For Life Plan people aged 60+ can secure this property for up to 59% less, by purchasing a Lifetime Lease.



23217756/20240425/RH/DW