



Price

£650,000

Freehold

4x  1x  2x 

**Oaktree Drive, Liss,
Hampshire, GU33**

OVER 60?

Secure this property
for up to **59% less!**

cubitt&west
Helping you move forwards



Main features

- Garage has been converted into a useable room plus utility area
- Off road parking for multiple cars
- Open plan kitchen/diner, great for social and family time
- Liss Village location close to shops, schools, amenities and train station

Accommodation

GROUND FLOOR

Entrance Hall

Lounge: 20'7 x 11'3 (6.28m x 3.43m)

Kitchen/Diner: 20'8 x 9'10 (6.30m x 3.00m)

Cloakroom

FIRST FLOOR

Landing

Bedroom 1: 12'0 x 10'5 (3.66m x 3.18m)

Bedroom 2: 11'2 x 9'6 (3.41m x 2.90m)

Bedroom 3: 10'5 x 7'4 (3.17m x 2.24m)

Bedroom 4: 8'5 x 8'2 (2.57m x 2.49m)

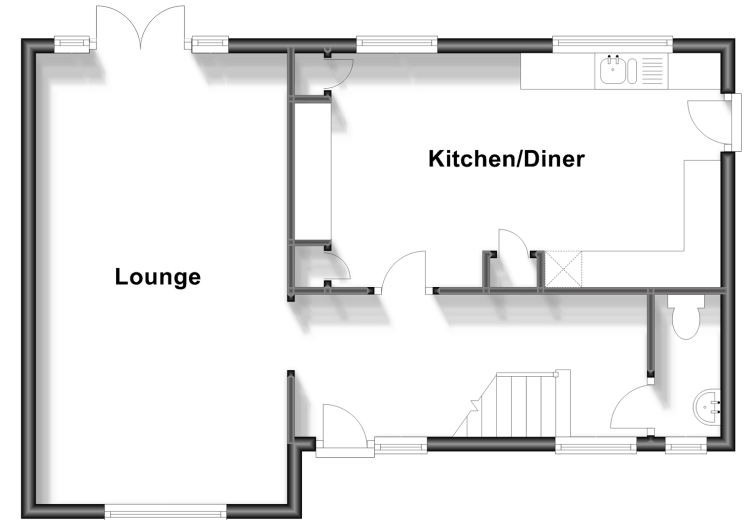
Bathroom

OUTSIDE

Front & Rear Garden

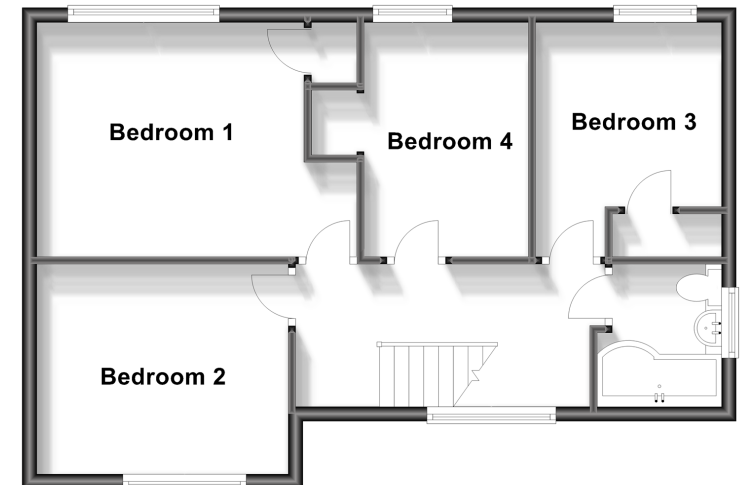
Ground Floor

Approx. 52.8 sq. metres (567.8 sq. feet)



First Floor

Approx. 52.8 sq. metres (567.8 sq. feet)



Call Petersfield - 01730 262931 ■ cubittandwest.co.uk

- Legal advice should be taken to verify fixtures/fittings, planning, alterations and/or lease details
- Appliances & services are untested, dimensions are approximate and floor plans are not to scale
- Through a Homewise Home For Life Plan people aged 60+ can secure this property for up to 59% less, by purchasing a Lifetime Lease.



23308161/20230609/SA/SA