



Price

£435,000

Freehold

3x  1x  1x 

**Moggs Mead,
Petersfield, Hampshire,
GU31**

OVER 60?

Secure this property
for up to **59% less!**



Video Tour available

cubitt & west
Helping you move forwards



Main features

- Excellent location close to Petersfield town centre
- Great-sized accommodation
- 15ft kitchen/breakfast room
- Garage accessed via garden
- Residents of Herne Farm benefit from access to the local swimming pool

Accommodation

GROUND FLOOR

Entrance Hall

Lounge: 14'2 x 12'0 (4.32m x 3.66m)

Kitchen/Breakfast Room: 15'4 x 9'8 (4.68m x 2.95m)

FIRST FLOOR

Landing

Bedroom 1: 13'1 x 9'0 maximum (3.99m x 2.75m)

Bedroom 2: 11'3 x 8'3 (3.43m x 2.52m)

Bedroom 3: 8'4 maximum x 6'10 (2.54m x 2.08m)

Bathroom

OUTSIDE

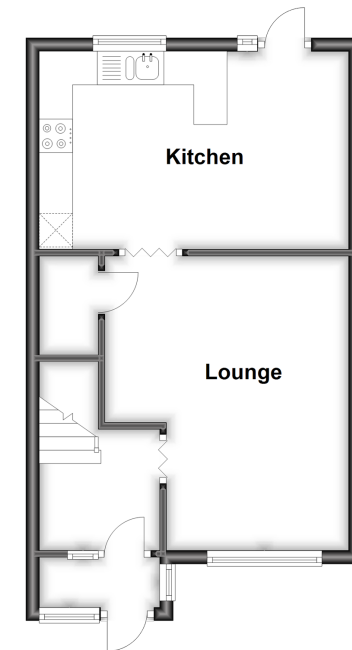
Front Garden

Rear Garden

Garage (access via garden)

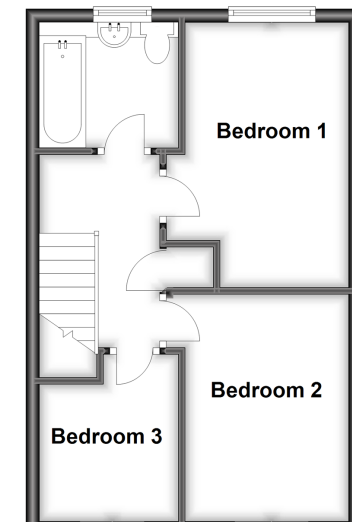
Ground Floor

Approx. 36.1 sq. metres (388.9 sq. feet)



First Floor

Approx. 34.6 sq. metres (372.4 sq. feet)



Call Petersfield - 01730 262931 ■ cubittandwest.co.uk

- Legal advice should be taken to verify fixtures/fittings, planning, alterations and/or lease details
- Appliances & services are untested, dimensions are approximate and floor plans are not to scale
- Through a Homewise Home For Life Plan people aged 60+ can secure this property for up to 59% less, by purchasing a Lifetime Lease.



23316454/20221216/DK/DK