



Price

£1,675,000

Freehold

8x  7x  5x 

**Hurst, Petersfield, West
Sussex, GU31**

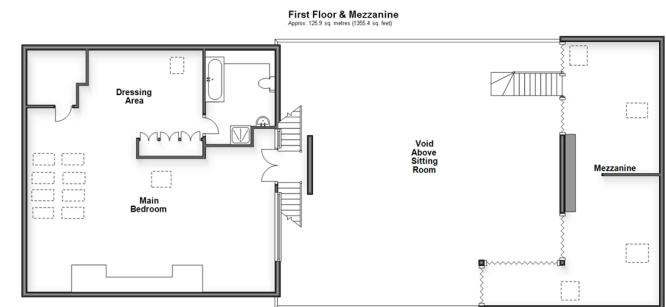
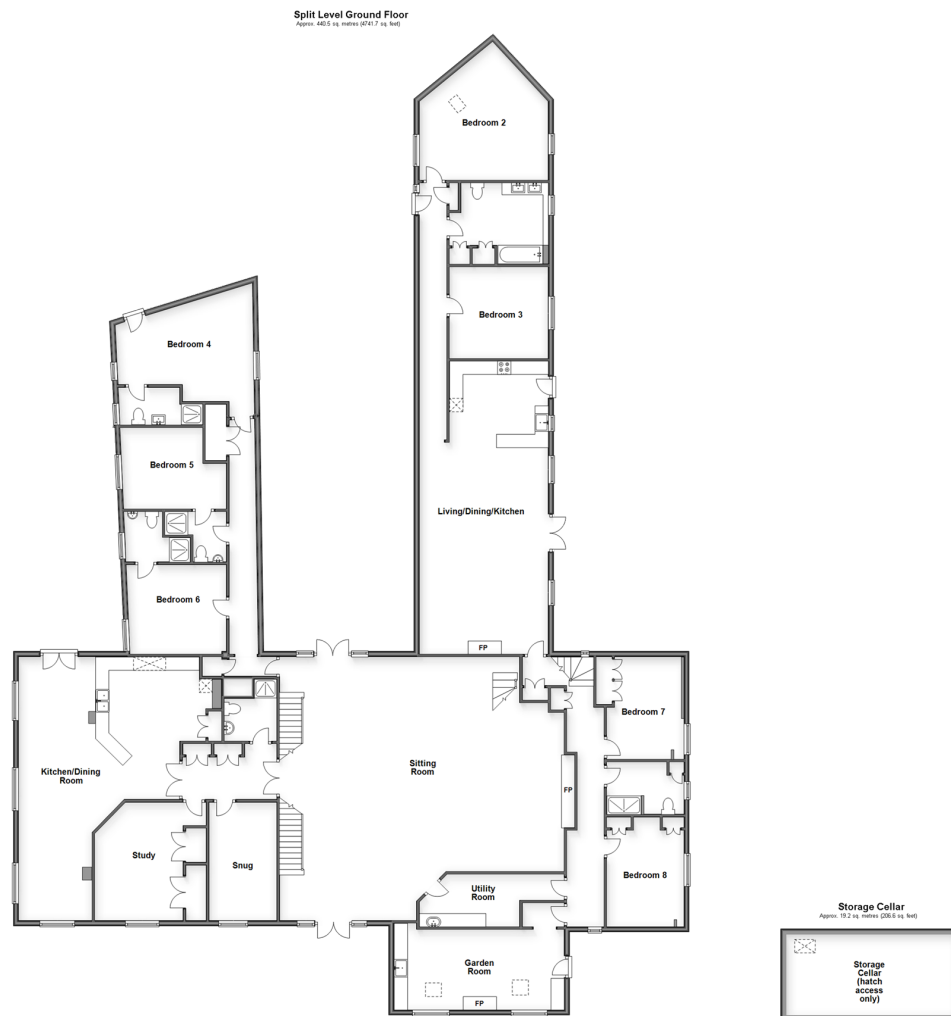
OVER 60?

Secure this property
for up to **59% less!**



Video Tour available

cubitt&west
Helping you move forwards



Accommodation

GROUND FLOOR

Kitchen/Dining Room: 33'5 x 24'6 (10.19m x 7.47m)

Study: 14'8 x 10'7 (4.47m x 3.23m)

Snug: 14'6 x 8'4 (4.42m x 2.54m)

Shower Room

Sitting Room: 33'5 x 32'11 (10.19m x 10.04m)

Hallway

Bedroom 4: 16'9 x 12'1 (5.11m x 3.69m)

En suite Shower Room

Bedroom 5: 13'3 x 10'0 (4.04m x 3.05m)

En suite Shower Room

Bedroom 6: 13'3 x 9'0 (4.04m x 2.75m)

En suite Shower Room

Utility Room

Hallway

Garden Room: 20'11 x 9'9 (6.38m x 2.97m)

Cellar: 20'9 x 9'11 (6.33m x 3.02m)

Bedroom 7: 12'6 x 9'6 (3.81m x 2.90m)

Bedroom 8: 13'5 x 9'6 (4.09m x 2.90m)

Shower Room

FIRST FLOOR

Bedroom 1 and Dressing Area: 30'8 x 30'0 (9.35m x 9.15m)

En suite Bathroom

Mezzanine: 31'5 x 12'0 (9.58m x 3.66m)

ANNEXE

Living/Dining/Kitchen: 35'11 x 16'9 (10.95m x 5.11m)

Bedroom 2: 18'1 x 17'6 (5.52m x 5.34m)

Bedroom 3: 12'9 x 11'0 (3.89m x 3.36m)

Bathroom

OUTSIDE

Side Garden

Rear Garden

Driveway and Off Road Parking



Main features

- Two bedroom annexe
- Flexible accommodation with potential for AirBnB or multi-family living
- Wealth of character features throughout with impressive rooms and galleries
- Substantial grounds and parking
- Charming Grade II listed



Nearest Schools

Primary Schools: Buriton Primary 1.6 miles, Herne Junior School 1.8 miles, Sheet Primary 2.3 miles

Secondary Schools: The Petersfield School 1.6 miles, Churcher's College 1.9 miles, Ditcham Park School 2.2



Transport Information

Train Stations: Petersfield 2.0 miles, Liss 4.2 miles



Address

Hurst, Petersfield, West Sussex, GU31



Directions

For directions to this property please contact us.



cubitt&west
Helping you move forwards

Call Petersfield Branch 01730 262931 ■ cubittandwest.co.uk



■ Legal advice should be taken to verify fixtures/fittings, planning, alterations and/or lease details ■ Appliances & services are untested, dimensions are approximate and floor plans are not to scale
■ Through a Homewise Home For Life Plan people aged 60+ can secure this property for up to 59% less, by purchasing a Lifetime Lease.



23316479/20231026/JT/SA