



Guide Price
£225,000

Leasehold

2x  1x  1x 

**Cremorne Place, King
George Avenue,
Petersfield, Hampshire,
GU32**



Video Tour available

cubitt&west
Helping you move forwards



Main features

- Beautifully presented throughout with lovely modern kitchen
- Popular retirement development
- Stairs and stair lift to first floor
- Guest facilities and residents' lounge
- Ideally situated for Petersfield town centre and amenities

Accommodation

GROUND FLOOR

Entrance Hall
Stairs and Stair Lift

FIRST FLOOR

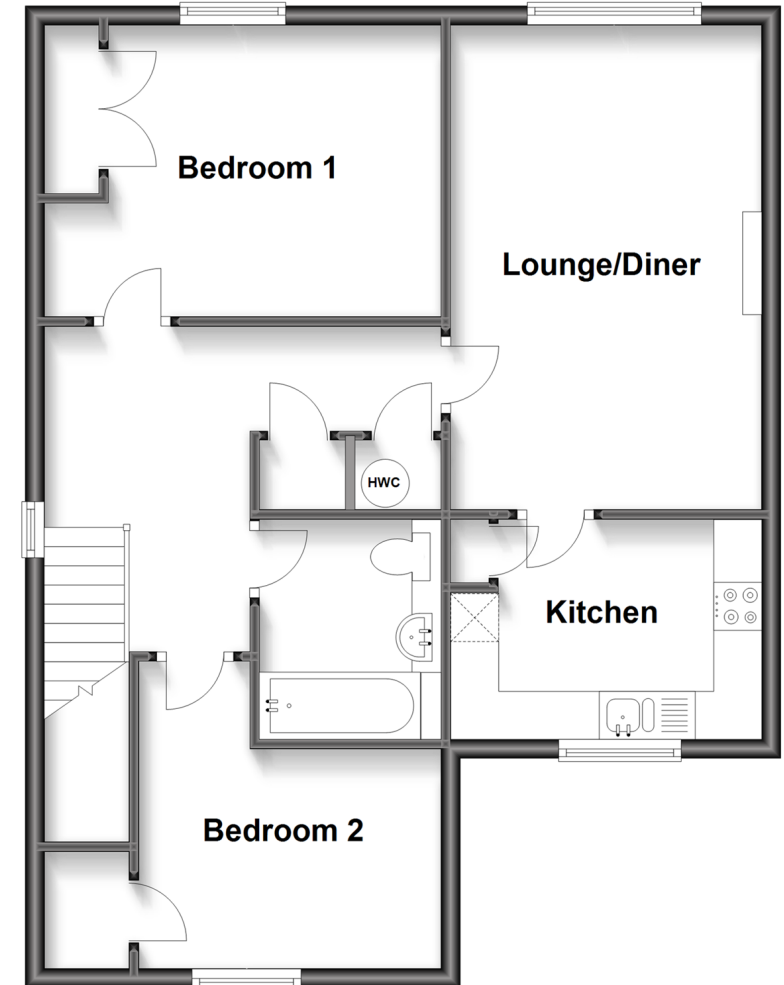
Hallway
Lounge/Diner: 16'6 x 10'7 (5.03m x 3.23m)
Kitchen: 10'7 x 7'7 (3.23m x 2.31m)
Bedroom 1: 13'6 maximum x 9'11 (4.12m x 3.02m)
Bedroom 2: 10'6 into door well x 10'5 (3.20m x 3.18m)
Bathroom

OUTSIDE

Communal Grounds

First Floor

Approx. 65.6 sq. metres (705.9 sq. feet)



Call Petersfield - 01730 262931 ■ cubittandwest.co.uk

- Legal advice should be taken to verify fixtures/fittings, planning, alterations and/or lease details
- Appliances & services are untested, dimensions are approximate and floor plans are not to scale



23316481/20230901/SA/DK