



OVER 60?

Secure this property
for up to **59% less!**

Price
£375,000

Leasehold

2x  1x  1x 

**Hilltops Court, North
Lane, Buriton,
Petersfield, Hampshire,
GU31**

cubitt&west
Helping you move forwards



Main features

- No forward chain
- Beautiful original features throughout
- Private garden and garage
- Easy access to motorway links and Petersfield train station
- Wonderfully situated in Buriton village surrounded by countryside

Accommodation

GROUND FLOOR

Entrance Porch

Entrance Hall

Lounge: 18'4 x 11'8 (5.59m x 3.56m)

Kitchen: 8'0 x 7'2 (2.44m x 2.19m)

Bedroom 2: 11'10 x 11'8 (3.61m x 3.56m)

Bathroom

LOWER GROUND FLOOR

Bedroom 1: 14'10 x 11'2 (4.52m x 3.41m)

OUTSIDE

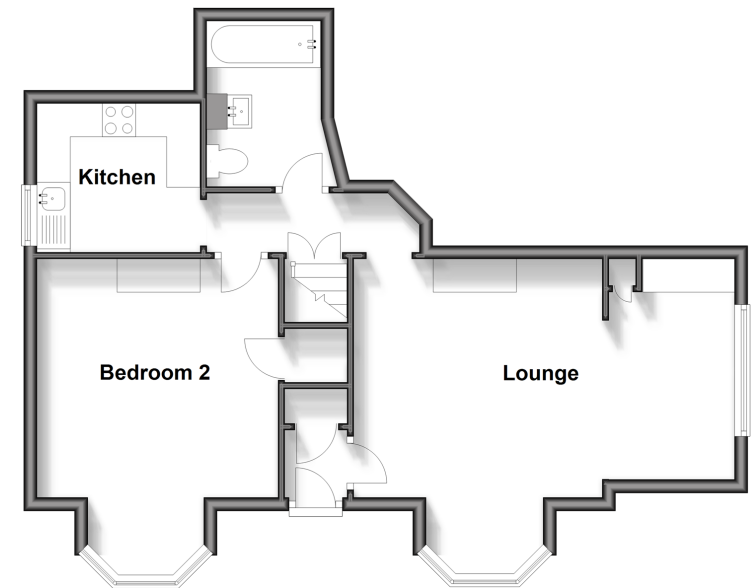
Communal Garden

Garage

Off Road Parking

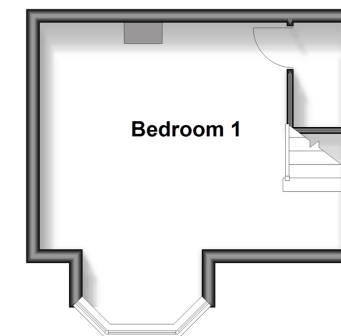
Ground Floor

Approx. 53.5 sq. metres (575.4 sq. feet)



Lower Ground Floor

Approx. 16.9 sq. metres (181.8 sq. feet)



Call Petersfield - 01730 262931 ■ cubittandwest.co.uk

- Legal advice should be taken to verify fixtures/fittings, planning, alterations and/or lease details
- Appliances & services are untested, dimensions are approximate and floor plans are not to scale
- Through a Homewise Home For Life Plan people aged 60+ can secure this property for up to 59% less, by purchasing a Lifetime Lease.



23316707/20240416/EH/SA