



Price
£575,000

Freehold

4x  3x  2x 

**Brook Terrace, Hooley
Lane, Redhill, Surrey,
RH1**

OVER 60?

Secure this property
for up to **59% less!**



Video Tour available

cubitt&west
Helping you move forwards



Main features

- Spacious home in a popular location
- Large windows providing lots of natural light
- Walking distance to both Earlswood & Redhill train stations
- Fabulous top floor suite with an en-suite and walk in wardrobe
- Offered in excellent condition throughout

Accommodation

GROUND FLOOR

Hallway
Cloakroom
Study: 10'7 x 10'1 (3.23m x 3.08m)
Kitchen: 8'3 x 7'7 (2.52m x 2.31m)
Lounge: 14'6 x 12'6 (4.42m x 3.81m)
Dining Area

FIRST FLOOR

Landing
Bedroom 2: 13'4 x 8'5 (4.07m x 2.57m)
En-Suite Shower Room
Bedroom 3: 12'11 x 9'3 (3.94m x 2.82m)
Bedroom 4: 9'5 x 5'10 (2.87m x 1.78m)
Bathroom

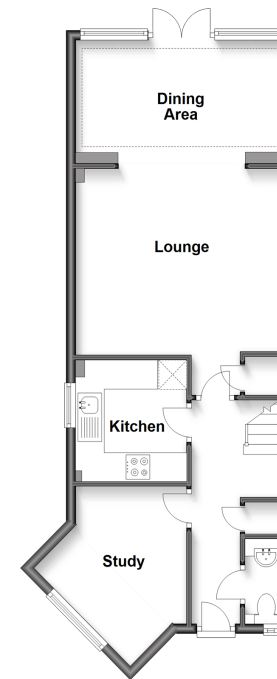
SECOND FLOOR

Bedroom 1: 18'3 x 11'8 (5.57m x 3.56m)
En-Suite Shower Room
Walk in Wardrobe

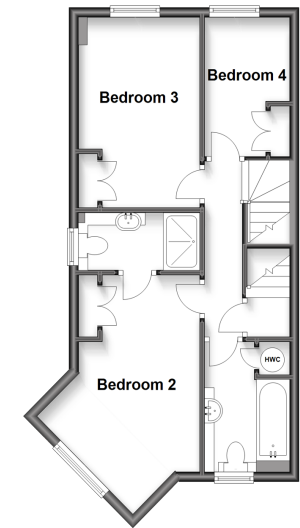
OUTSIDE

Rear Garden
Side Garden

Ground Floor
Approx. 54.8 sq. metres (590.4 sq. feet)



First Floor
Approx. 43.1 sq. metres (464.2 sq. feet)



Second Floor
Approx. 31.5 sq. metres (338.5 sq. feet)



Call Redhill - 01737 778866 ■ cubittandwest.co.uk

- Legal advice should be taken to verify fixtures/fittings, planning, alterations and/or lease details
- Appliances & services are untested, dimensions are approximate and floor plans are not to scale
- Through a Homewise Home For Life Plan people aged 60+ can secure this property for up to 59% less, by purchasing a Lifetime Lease.



23409198/20230215/TH/JB