



**Price**

**£130,000**

**Leasehold**

1x  1x  1x 

**Linters Court, London  
Road, Redhill, Surrey,  
RH1**



**Video Tour available**

**cubitt&west**  
Helping you move forwards





## Main features

- A spacious retirement flat built by McCarthy & Stone
- Neutrally decorated and offered in good condition
- Residential lounge & beautiful communal gardens
- Lift service to all floors & residents parking
- No onward chain

## Accommodation

### FIRST FLOOR

Hallway

Lounge / Diner: 21'4 x 11'6 (6.51m x 3.51m)

Kitchen: 9'1 x 6'9 (2.77m x 2.06m)

Bedroom: 18'2 x 9'4 (5.54m x 2.85m)

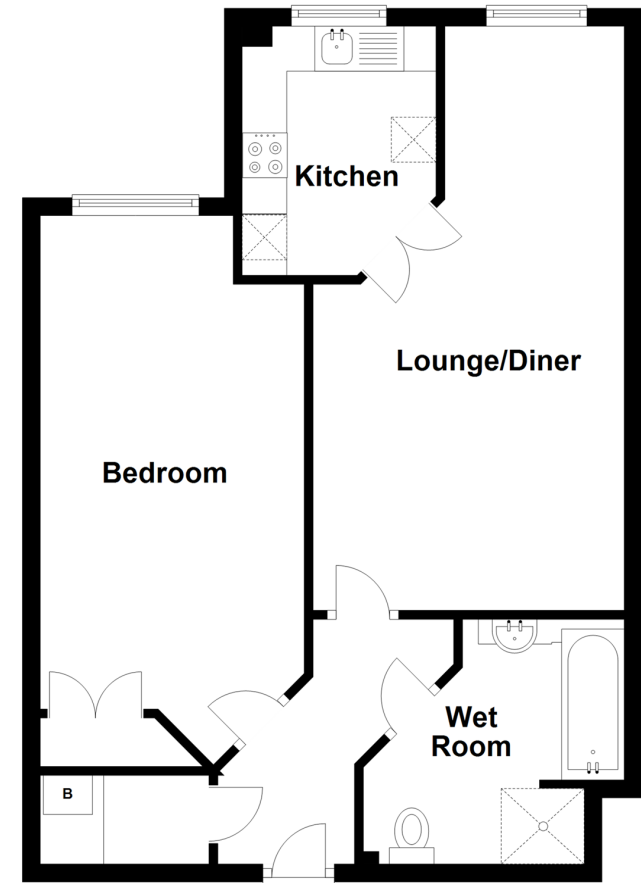
Wet Room: 9'4 x 8'9 (2.85m x 2.67m)

### OUTSIDE

Residents Parking  
Communal Gardens

## First Floor

Approx. 55.8 sq. metres (600.7 sq. feet)



**Call Redhill - 01737 778866 ■ [cubittandwest.co.uk](http://cubittandwest.co.uk)**

- Legal advice should be taken to verify fixtures/fittings, planning, alterations and/or lease details
- Appliances & services are untested, dimensions are approximate and floor plans are not to scale



23409946/20210803/ZV/DK