



Guide Price
£430,000

Freehold

2x  1x  2x 

**Copsleigh Close,
Salfords, Surrey, RH1**

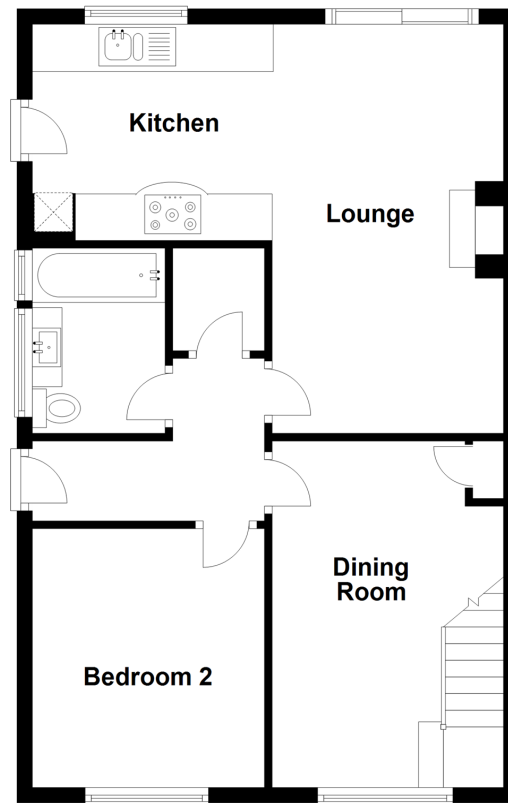
OVER 60?

You could get up to
59% off the price!*

cubitt&west
Helping you move forwards

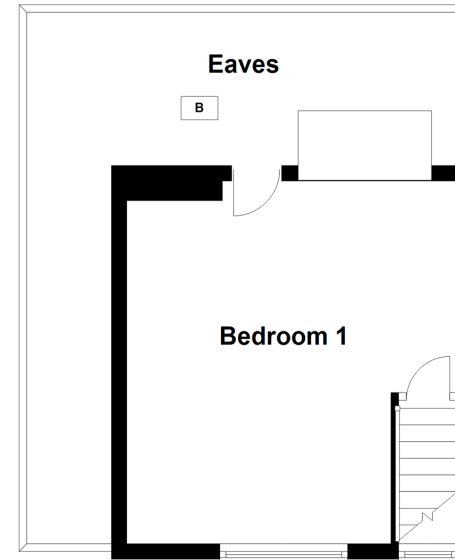
Ground Floor

Approx. 60.4 sq. metres (650.3 sq. feet)



First Floor

Approx. 20.1 sq. metres (216.8 sq. feet)



Accommodation

GROUND FLOOR

Entrance Hall

Bathroom: 7'8 x 5'5 (2.34m x 1.65m)

Lounge: 17'8 x 10'6 (5.39m x 3.20m)

Kitchen: 10'11 x 8'9 (3.33m x 2.67m)

Dining Area: 14'6 x 9'8 (4.42m x 2.95m)

Bedroom 2: 10'9 x 9'9 (3.28m x 2.97m)

FIRST FLOOR

Bedroom 1: 15'1 x 14'4 (4.60m x 4.37m)

Eaves Storage

OUTSIDE

Driveway

Rear Garden



Main features

- Charming chalet bungalow tucked away in a peaceful cul de sac
- Bright and spacious rooms throughout
- Large open plan kitchen/ lounge, perfect for entertaining
- Immaculately presented and ready to move straight into
- Beautifully landscaped rear garden with a summer house



Nearest Schools

Salfords Primary 0.1 miles, St John's Primary 1.8 miles, St Joseph's Catholic Primary, Redhill 2.2 miles
Cornfield School 0.6 miles, Reigate School 2.3 miles, The Warwick School 2.8 miles



Transport Information

Train Stations: Salfords 0.7 miles, Earlswood 1.5 miles, Redhill 2.4 miles



Address

Copsleigh Close, Salfords, Surrey, RH1



Directions

For directions to this property please contact us.



cubitt&west
Helping you move forwards

Call Redhill Branch 01737 778866 ■ cubittandwest.co.uk



- Legal advice should be taken to verify fixtures/fittings, planning, alterations and/or lease details
- Appliances & services are untested, dimensions are approximate and floor plans are not to scale
- Our Homewise partnership offer a 'Home for Life' plan to buyers over 60, granting a lifetime lease for your protection and reducing the purchase price by up to 59%



23410665/20220730/MN/MN