



Guide Price
£330,000

**Share of
Freehold**

2x  1x  1x 

**Sherwood House,
Abinger Drive, Redhill,
Surrey, RH1**



Video Tour available

cubitt&west
Helping you move forwards



Main features

- A charming character maisonette
- High ceilings & large period style sash windows with shutters
- Generous sized bedroom both with fitted wardrobes
- Spacious & modern fitted kitchen with integrated appliances
- Allocated parking space & visitors parking

Accommodation

FIRST FLOOR

Entrance Hall

Lounge / Dining Area: 20'0 x 11'1
(6.10m x 3.38m)

Kitchen / Breakfast Area: 10'7 x 10'3
(3.23m x 3.13m)

Bedroom 1: 11'3 x 10'2 (3.43m x 3.10m)

Bedroom 2: 11'3 x 10'2 (3.43m x 3.10m)

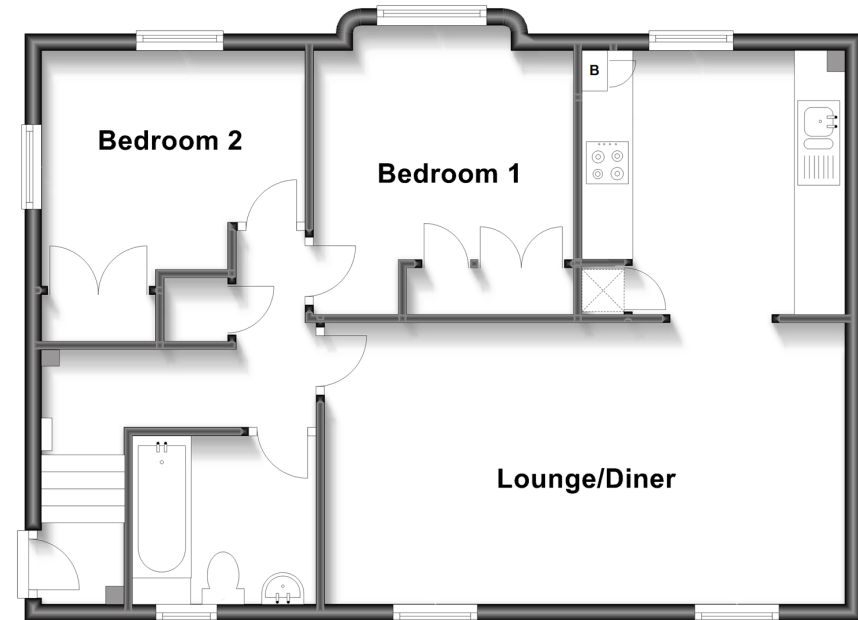
Bathroom: 7'0 x 6'6 (2.14m x 1.98m)

OUTSIDE

Allocated Parking
Communal Garden

Split Level First Floor

Approx. 63.0 sq. metres (678.6 sq. feet)



Call Redhill - 01737 778866 ■ cubittandwest.co.uk

- Legal advice should be taken to verify fixtures/fittings, planning, alterations and/or lease details
- Appliances & services are untested, dimensions are approximate and floor plans are not to scale



23410839/20220910/TH/MN