



Price

£150,000

Leasehold

2x  1x  1x 

**Linters Court, London
Road, Redhill, Surrey,
RH1**



Video Tour available

cubitt&west
Helping you move forwards



Main features

- A well presented and spacious ground floor retirement flat
- Premium position close to Guest suite and all facilities
- Large lounge/diner and 2 generous double bedrooms
- On-site house manager and 1 hour of domestic help each week
- Residents lounge & restaurant offering a subsidised 3-course lunch
- Laundry room and lifts to all floors
- Lovely communal garden and residents parking

Accommodation

GROUND FLOOR

Entrance Hall

Bathroom: 9'4 x 8'9 (2.85m x 2.67m)

Lounge / Diner: 21'3 x 11'5 (6.48m x 3.48m)

Kitchen: 9'1 x 6'9 (2.77m x 2.06m)

Bedroom 2: 16'2 x 9'3 (4.93m x 2.82m)

Bedroom 1: 14'2 x 9'4 (4.32m x 2.85m)

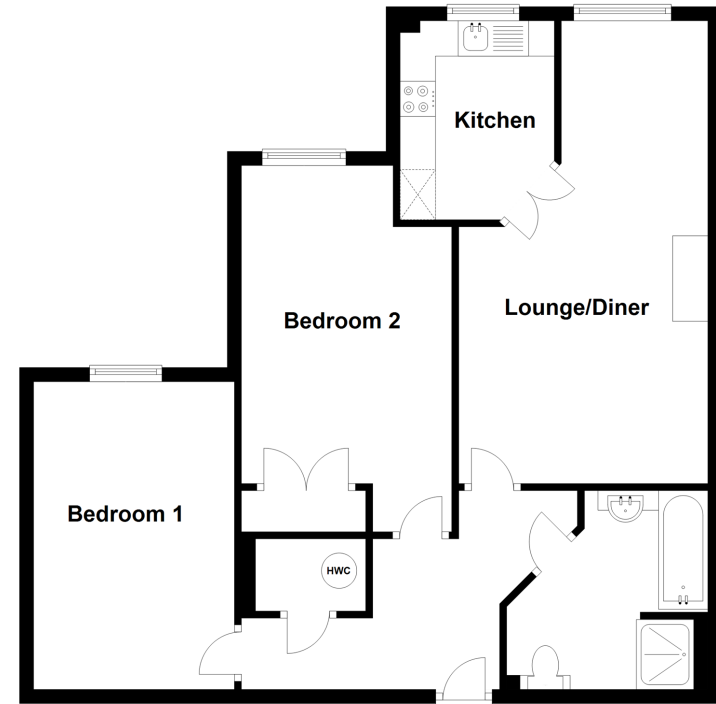
OUTSIDE

Communal Garden

Residents Parking

Ground Floor

Approx. 70.9 sq. metres (763.1 sq. feet)



Call Redhill - 01737 778866 ■ cubittandwest.co.uk

■ Legal advice should be taken to verify fixtures/fittings, planning, alterations and/or lease details

■ Appliances & services are untested, dimensions are approximate and floor plans are not to scale



23410845/20230804/TH/KC