



**Price**

**£220,000**

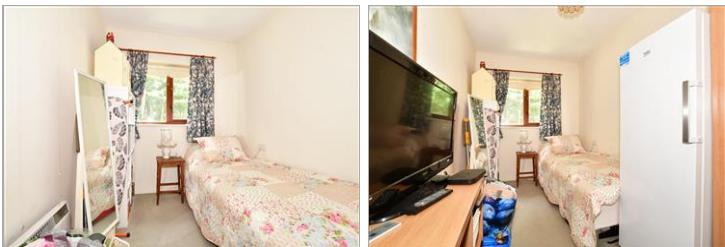
**Leasehold**

2x  1x  1x 

**Bramble Close, Redhill,  
Surrey, RH1**

**cubitt&west**  
Helping you move forwards





## Main features

- A fabulous maisonette for over 55's
- Generous lounge and double bedrooms
- Built in wardrobes to bedroom
- Recently refitted shower room
- Residents parking area and beautiful communal gardens
- Juliet balcony with stunning views of the surrounding area

## Accommodation

### GROUND FLOOR

Entrance Hall  
Stairs

### FIRST FLOOR

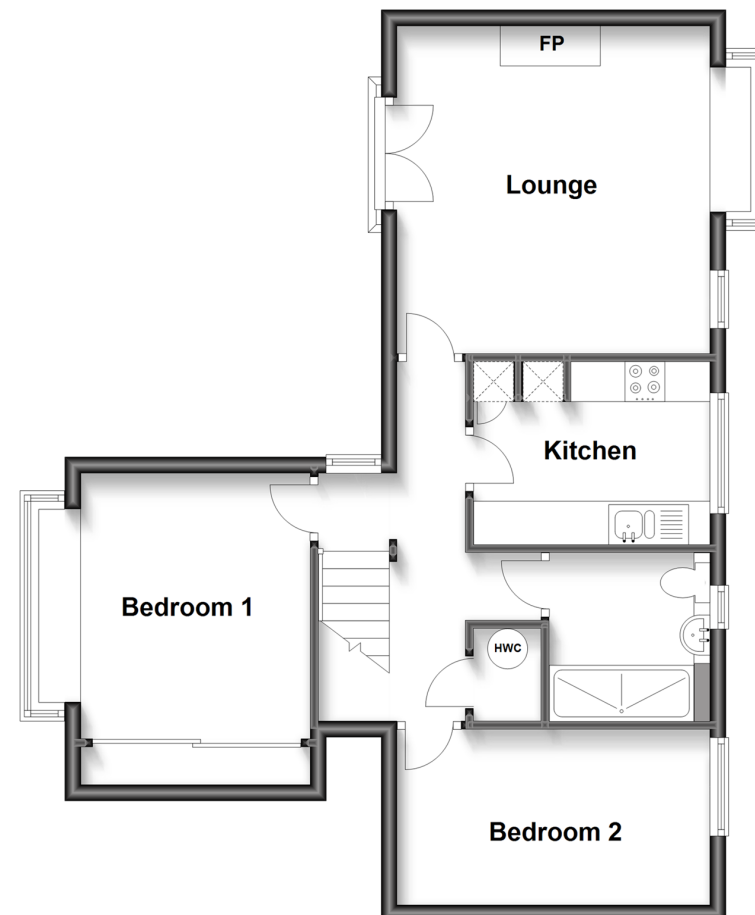
Landing  
Lounge: 15'3 x 13'4 (4.65m x 4.07m)  
Kitchen: 10'5 x 7'4 (3.18m x 2.24m)  
Bathroom : 7'9 x 6'8 (2.36m x 2.03m)  
Bedroom 1: 11'2 x 11'0 (3.41m x 3.36m)  
Bedroom 2: 13'4 x 7'2 (4.07m x 2.19m)

### OUTSIDE

Residents Parking  
Communal Garden

### First Floor

Approx. 58.5 sq. metres (629.4 sq. feet)



**Call Redhill - 01737 778866 ■ [cubittandwest.co.uk](http://cubittandwest.co.uk)**

- Legal advice should be taken to verify fixtures/fittings, planning, alterations and/or lease details
- Appliances & services are untested, dimensions are approximate and floor plans are not to scale