



Price

£100,000

Leasehold

1x  1x  1x 

**Redlin Court, Linkfield
Lane, Redhill, Surrey,
RH1**

cubitt&west
Helping you move forwards



Main features

- A spacious retirement apartment for residents over the age of 60
- Well maintained block with a laundry room and lift to all floors
- Allocated parking space and pretty communal garden
- Spacious lounge/diner and generous double bedrooms
- Convenient location, close to the amenities of Redhill town centre

Accommodation

SECOND FLOOR

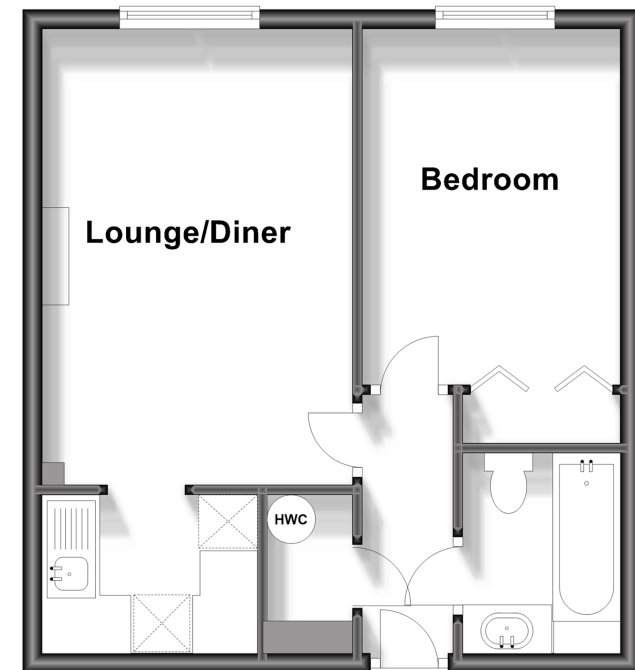
Entrance Hall
 Lounge / Diner: 16'0 x 11'2 (4.88m x 3.41m)
 Kitchen: 7'3 x 5'7 (2.21m x 1.70m)
 Bedroom 1: 12'3 x 8'7 (3.74m x 2.62m)
 Bathroom: 6'7 x 5'8 (2.01m x 1.73m)

OUTSIDE

Communal Garden
 Allocated Parking Space

Second Floor

Approx. 38.3 sq. metres (412.5 sq. feet)



Call Redhill - 01737 778866 ■ cubittandwest.co.uk

■ Legal advice should be taken to verify fixtures/fittings, planning, alterations and/or lease details

■ Appliances & services are untested, dimensions are approximate and floor plans are not to scale



23411131/20240328//JB