



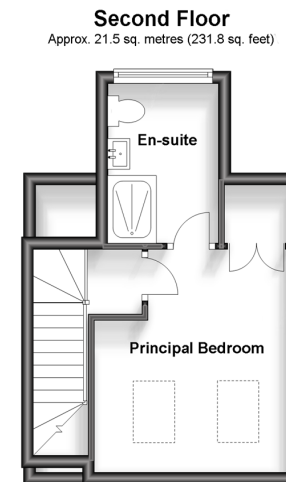
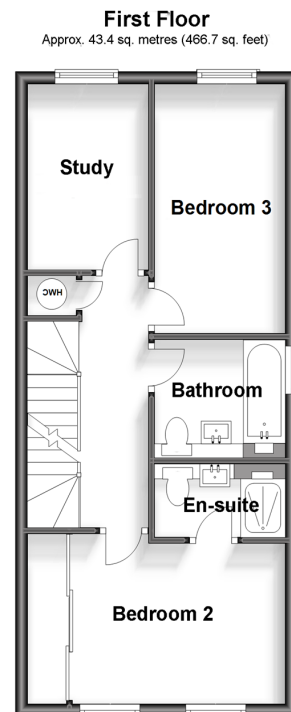
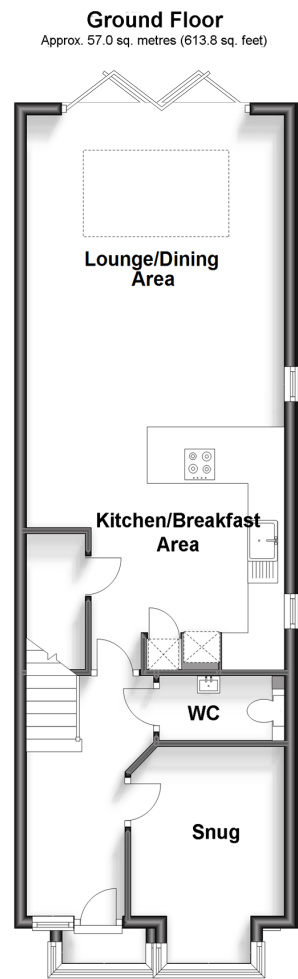
Price
£675,000

Freehold

3x  3x  2x 

**Primrose Gardens, South
Nutfield, Redhill, Surrey,
RH1**

cubitt&west
Helping you move forwards



Accommodation

GROUND FLOOR

Entrance Hall

Snug: 12'2 x 8'9 (3.71m x 2.67m)

Cloakroom : 7'2 x 3'4 (2.19m x 1.02m)

Kitchen & Lounge/Dining Area: 30'1 x 14'1
(9.18m x 4.30m)

FIRST FLOOR

Landing

Bedroom 1: 12'3 x 9'4 (3.74m x 2.85m)

En-Suite Shower Room: 7'2 x 4'4 (2.19m x 1.32m)

Bedroom 3: 13'9 x 7'3 (4.19m x 2.21m)

Study: 10'5 x 6'8 (3.18m x 2.03m)

SECOND FLOOR

Landing

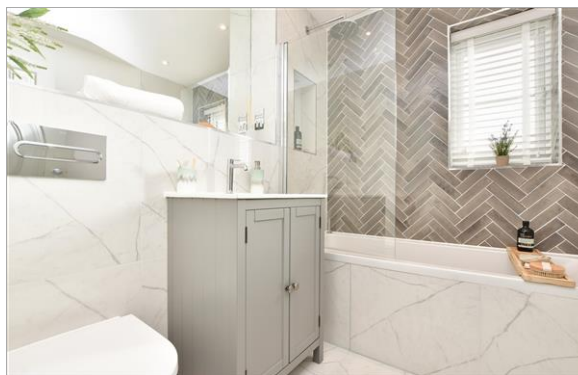
Principal Bedroom: 10'4 x 8'7 (3.15m x 2.62m)

En-Suite Shower Room: 9'11 x 6'0 (3.02m x 1.83m)

OUTSIDE

Allocated Parking

Rear Garden



Main features

- Attractive, newly built home in an idyllic Village location, just moments from Nutfield train station
- Finished to a high specification throughout
- Spacious, open plan lounge/diner and kitchen with bi-fold doors
- Sunny rear garden with patio and freshly laid turf
- Study, perfect home office or a cosy snug
- Double bedrooms, 2 with en-suite shower rooms
- Family bathroom and downstairs cloakroom



Nearest Schools

Primary Schools: Nutfield Church CofE Primary 0.3 miles, Brambletye Junior School 1.1 miles, Salfords Primary 1.8 miles

Secondary Schools: The Warwick School 1.6 miles,



Transport Information

Train Stations: Nutfield 0.0 miles, Earlswood 1.5 miles, Redhill 1.6 miles



Address

Primrose Gardens, South Nutfield, Redhill, Surrey, RH1



Directions

For directions to this property please contact us.



cubitt&west
Helping you move forwards

Call Redhill Branch 01737 778866 ■ cubittandwest.co.uk



■ Legal advice should be taken to verify fixtures/fittings, planning, alterations and/or lease details ■ Appliances & services are untested, dimensions are approximate and floor plans are not to scale



23411148/20240207//JB