



Price
£260,000

Leasehold

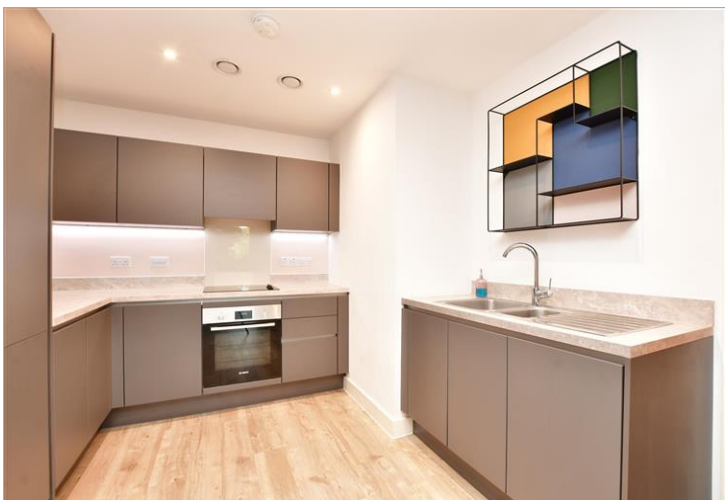
1x  1x  1x 

**Picture House,
Marketfield Way,
Redhill, Surrey, RH1**

OVER 60?

Secure this property
for up to **59% less!**

cubitt&west
Helping you move forwards



Main features

- Moments from Redhill train station going straight to London Bridge
- Ideal property for First Time Buyers or Investors
- Sleek kitchen with fitted appliances
- Sunny balcony off lounge/diner
- Spacious bedroom with built-in wardrobe and a modern bathroom
- Shared ownership available

Accommodation

FIRST FLOOR

Entrance Hall: 12'7 x 6'5 (3.84m x 1.96m)

Lounge/Diner and Kitchen: 25'7 x 10'2 (7.80m x 3.10m)

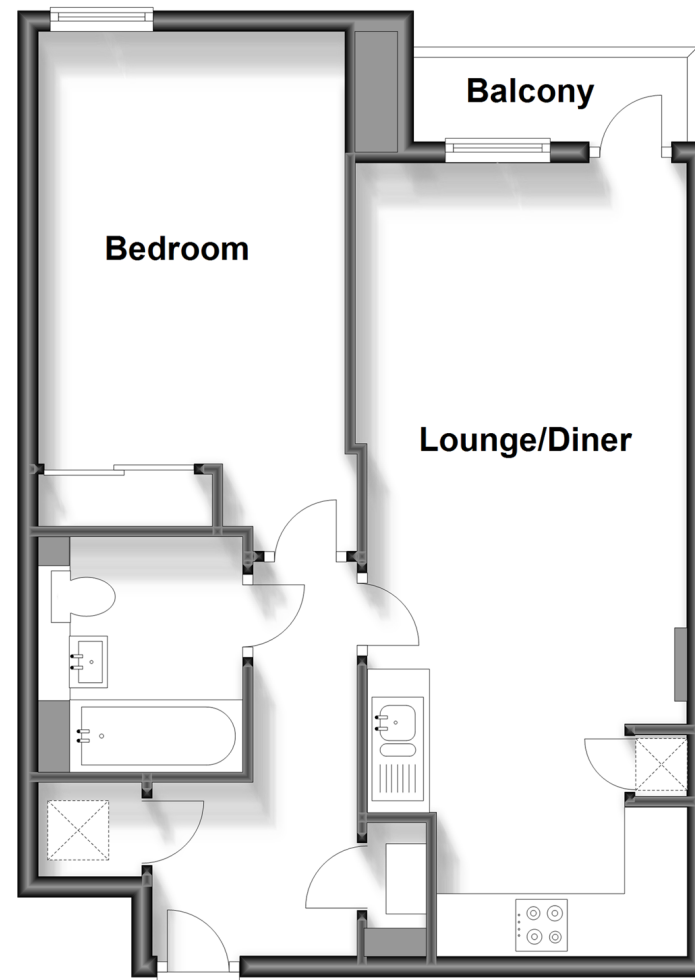
Balcony

Bedroom: 15'7 x 9'8 (4.75m x 2.95m)

Bathroom: 7'3 x 5'6 (2.21m x 1.68m)

First Floor

Approx. 51.7 sq. metres (556.8 sq. feet)



Call Redhill - 01737 778866 ■ cubittandwest.co.uk

- Legal advice should be taken to verify fixtures/fittings, planning, alterations and/or lease details
- Appliances & services are untested, dimensions are approximate and floor plans are not to scale
- Through a Homewise Home For Life Plan people aged 60+ can secure this property for up to 59% less, by purchasing a Lifetime Lease.



23411155/20240314//MD