



Price
£525,000

Freehold

3x  1x  2x 

**Thepps Close, South
Nutfield, Redhill, Surrey,
RH1**

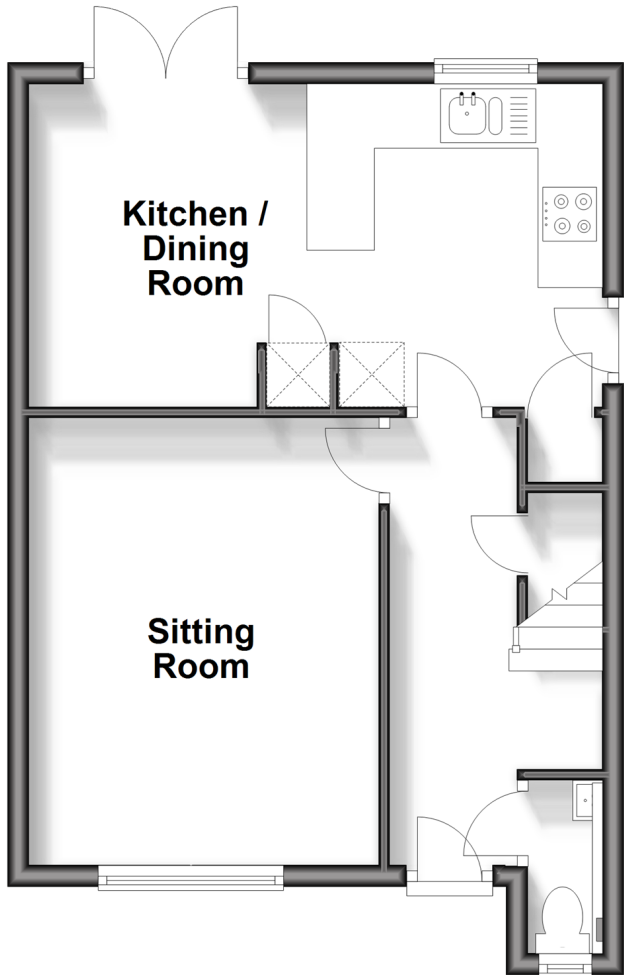
OVER 60?

Secure this property
for up to **59% less!**

cubitt&west
Helping you move forwards

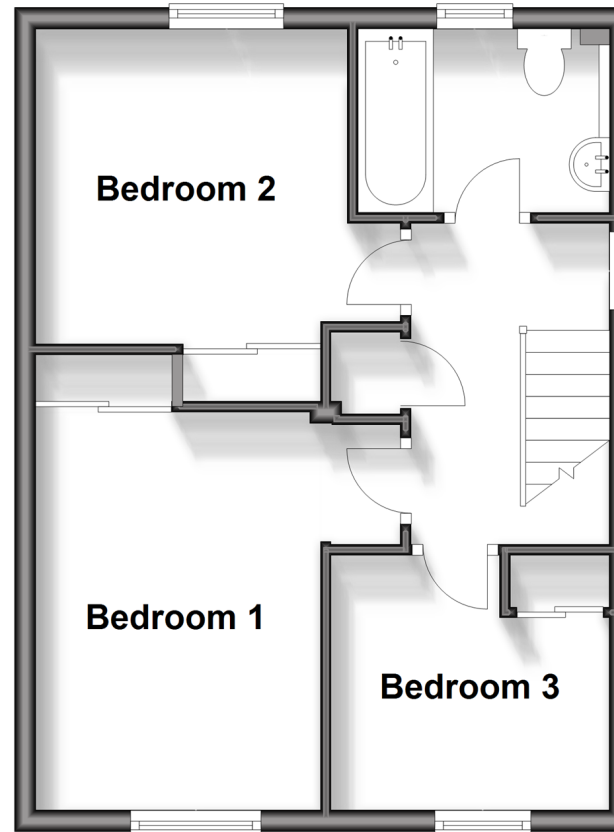
Ground Floor

Approx. 39.3 sq. metres (423.4 sq. feet)



First Floor

Approx. 38.9 sq. metres (418.3 sq. feet)



Accommodation

GROUND FLOOR

Hallway

Cloakroom

Sitting Room: 13'9 x 10'9 (4.19m x 3.28m)

Kitchen/Dining Room: 17'9 x 9'9 (5.41m x 2.97m)

FIRST FLOOR

Landing

Bathroom

Bedroom 1: 12'1 x 8'9 (3.69m x 2.67m)

Bedroom 2: 9'6 x 9'6 (2.90m x 2.90m)

Bedroom 3: 8'9 x 7'9 (2.67m x 2.36m)

OUTSIDE

Driveway

Front Garden

Rear Garden



Main features

- Detached spacious house requiring minimal work
- Quiet Cul-de sac location
- Modern fitted kitchen with side entrance to property
- Private rear garden overlooking beautiful fields
- Short walk to Nutfield station and multiple amenities



Nearest Schools

Primary Schools: Nutfield Church CofE Primary 0.9 miles, Bramletye Junior School 2.5 miles
 Secondary Schools: Reigate Grammar School 2.9 miles, The Warwick School 3.0 miles
 Further Education: Reigate Grammar School 3.7 miles



Transport Information

Train Stations: Nutfield 0.8 miles, Earlswood 2.7 miles, Redhill 2.9 miles



Address

Thepps Close, South Nutfield, Redhill, Surrey, RH1



Directions

For directions to this property please contact us.



cubitt&west
Helping you move forwards

Call Redhill Branch 01737 778866 ■ cubittandwest.co.uk



■ Legal advice should be taken to verify fixtures/fittings, planning, alterations and/or lease details ■ Appliances & services are untested, dimensions are approximate and floor plans are not to scale
■ Through a Homewise Home For Life Plan people aged 60+ can secure this property for up to 59% less, by purchasing a Lifetime Lease.



23411194/20240416/JB2/JB2