



Price

£270,000

Leasehold

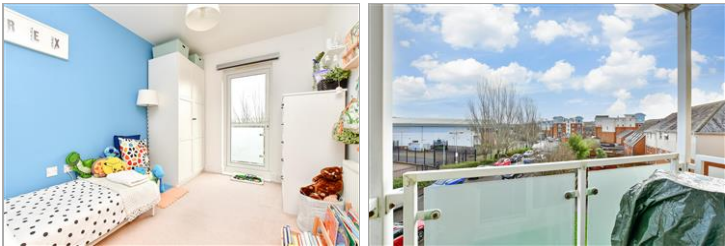
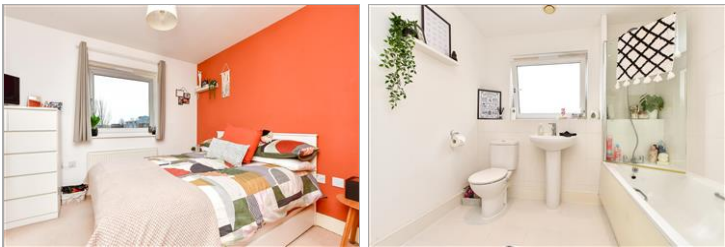
2x  2x  1x 

**Burlescombe House,
Burrage Road, Redhill,
Surrey, RH1**

OVER 60?

Secure this property
for up to **59% less!**

cubitt&west
Helping you move forwards



Main features

- Bright and spacious apartment with 2 sunny balconies
- Generous bedrooms with en-suite shower room to bedroom 1
- Leafy communal grounds
- Convenient location just a few minutes walk to Town Centre
- In walking distance to multiple schools and parks

Accommodation

SECOND FLOOR

Entrance Hall: 22'8 x 3'5 (6.91m x 1.04m)

Bedroom 1: 12'2 x 10'8 (3.71m x 3.25m)

En-Suite Shower Room: 7'5 x 3'8 (2.26m x 1.12m)

Bedroom 2: 10'7 x 8'0 (3.23m x 2.44m)

Balcony off Bedroom 2

Lounge/Diner: 22'9 x 20'6 (6.94m x 6.25m)

Balcony off Lounge/Diner

Kitchen: 14'5 x 6'3 (4.40m x 1.91m)

Bathroom: 8'0 x 7'3 (2.44m x 2.21m)

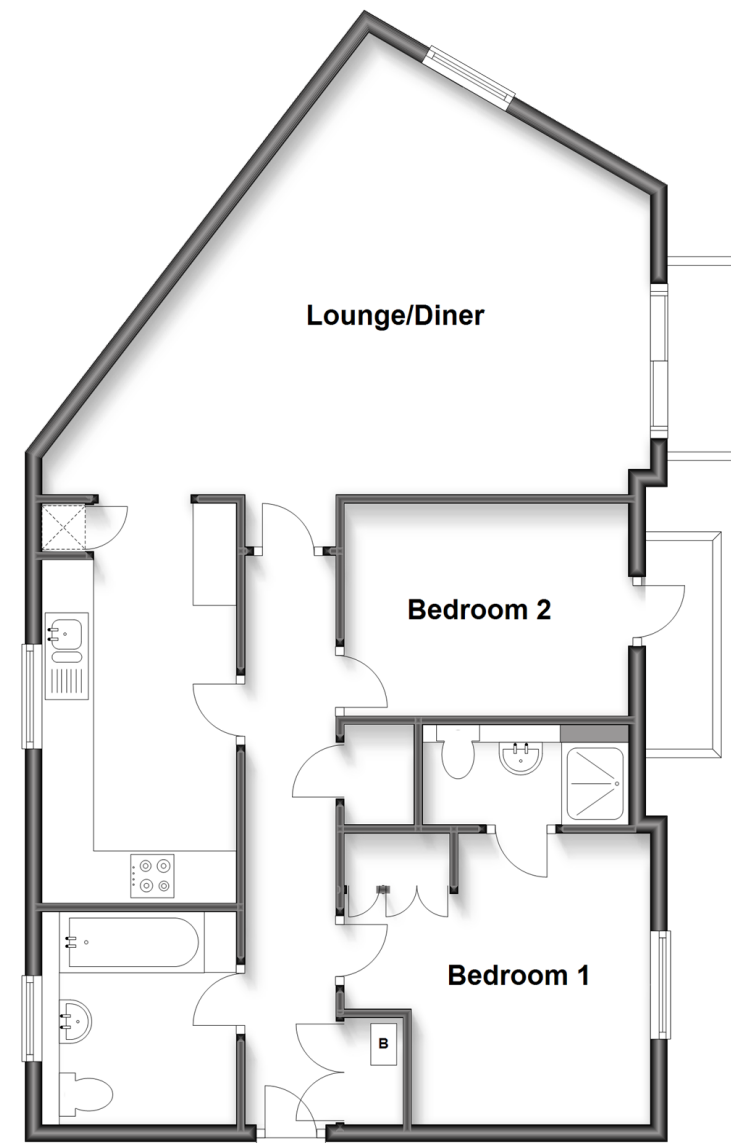
OUTSIDE

Allocated Parking

Communal Garden

Second Floor

Approx. 74.7 sq. metres (803.9 sq. feet)



Call Redhill - 01737 778866 ■ cubittandwest.co.uk

- Legal advice should be taken to verify fixtures/fittings, planning, alterations and/or lease details
- Appliances & services are untested, dimensions are approximate and floor plans are not to scale
- Through a Homewise Home For Life Plan people aged 60+ can secure this property for up to 59% less, by purchasing a Lifetime Lease.

