



**Price**

**£150,000**

**Leasehold**

1x  1x  1x 

**Douglas Houghton  
House, Oxford Road,  
Redhill, Surrey, RH1**

**OVER 60?**

Secure this property  
for up to **59% less!**

**cubitt&west**  
Helping you move forwards





## Main features

- Ideally located first floor flat for over 55s
- Lift and Phone entry system for extra security
- Beautiful views and large communal grounds
- Allocated parking space
- A short walk to Redhill Town Centre and Train Station

## Accommodation

### FIRST FLOOR

Hallway

Bedroom : 10'8 x 9'5 (3.25m x 2.87m)

Bathroom

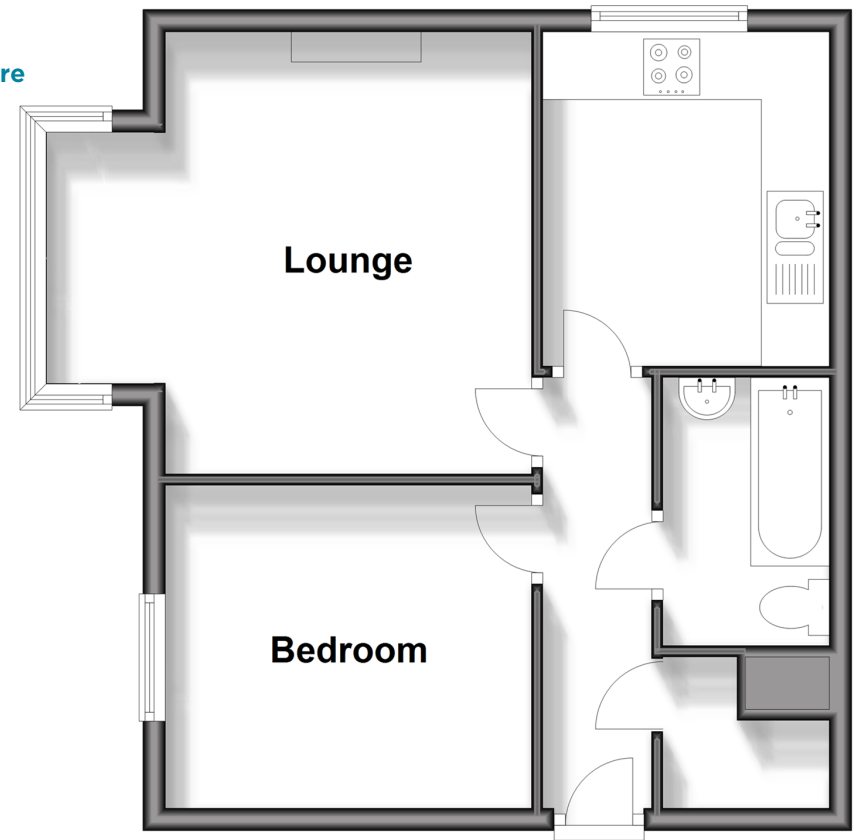
Reception: 13'9 x 13'1 (4.19m x 3.99m)

Kitchen: 9'9 x 8'5 (2.97m x 2.57m)



## First Floor

Approx. 43.3 sq. metres (465.8 sq. feet)



**Call Redhill - 01737 778866 ■ [cubittandwest.co.uk](http://cubittandwest.co.uk)**

- Legal advice should be taken to verify fixtures/fittings, planning, alterations and/or lease details
- Appliances & services are untested, dimensions are approximate and floor plans are not to scale
- Through a Homewise Home For Life Plan people aged 60+ can secure this property for up to 59% less, by purchasing a Lifetime Lease.



23411236/20240409/JB2/JB2