



Price
£450,000

Leasehold

2x  2x  1x 

**Picture House,
Marketfield Way,
Redhill, Surrey, RH1**

OVER 60?

Secure this property
for up to **59% less!**

cubitt & west
Helping you move forwards



Main features

- 2 Bedroom 9th Floor Apartment
- Close Proximity to High Street
- 2 Bathrooms Including En-Suite
- Pet Friendly
- Allocated Parking
- Dual Aspect Lounge

Accommodation

NINTH FLOOR

Hallway

Kitchen/Lounge: 30'4 x 11'4 (9.25m x 3.46m)

Bedroom 1: 19'0 x 9'0 (5.80m x 2.75m)

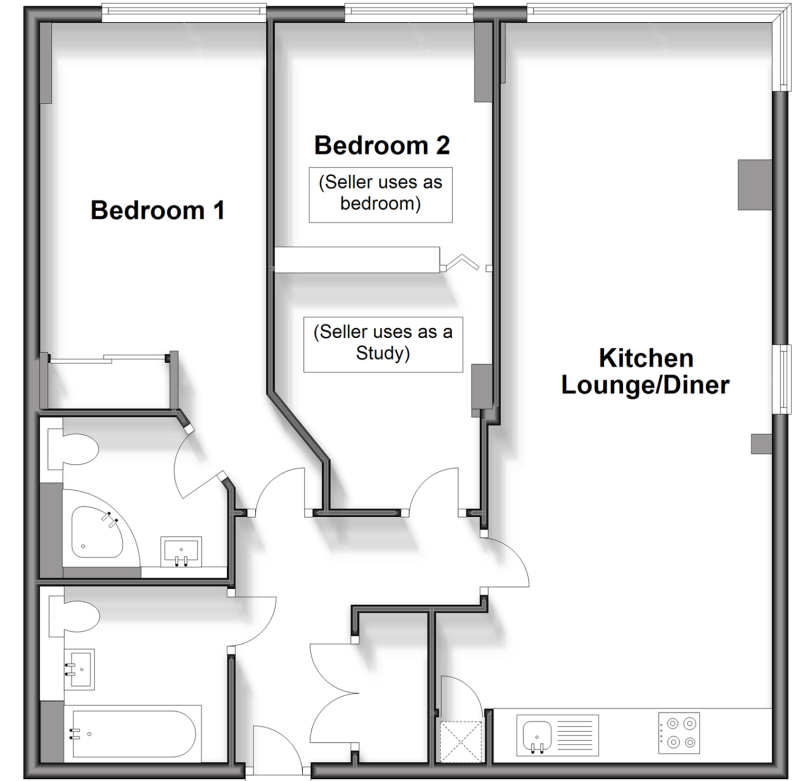
En Suite

Bedroom 2: 20'0 x 8'7 (6.10m x 2.62m)

Bathroom

Ninth Floor

Approx. 82.1 sq. metres (883.8 sq. feet)



Call Redhill - 01737 778866 ■ cubittandwest.co.uk

- Legal advice should be taken to verify fixtures/fittings, planning, alterations and/or lease details
- Appliances & services are untested, dimensions are approximate and floor plans are not to scale
- Through a Homewise Home For Life Plan people aged 60+ can secure this property for up to 59% less, by purchasing a Lifetime Lease.



23411256/20240507/JB2/JB2