



**Price**

**£450,000**

**Freehold**

3x  2x  1x 

**Windmill Close,  
Ashington, West Sussex,  
RH20**

**OVER 60?**

Secure this property  
for up to **59% less!**

**cubitt&west**  
Helping you move forwards





## Main features

- **Significantly improved and reconfigured semi-detached bungalow in a quiet cul de sac**
- **Superb open plan living/kitchen/dining space**
- **Refitted bathroom and en-suite**
- **Wrap around plot with good sized secluded gardens.**
- **Large driveway**

## Accommodation

### GROUND FLOOR

Hall

Family Bathroom

Lounge area: 12'0 x 10'9 (3.66m x 3.28m)

Dining area: 15'8 x 11'9 (4.78m x 3.58m)

Kitchen area: 12'3 x 9'9 (3.74m x 2.97m)

Utility: 14'6 x 7'9 (4.42m x 2.36m)

Bedroom 1: 12'8 x 10'4 (3.86m x 3.15m)

En suite Shower Room

Bedroom 2: 15'7 x 8'2 (4.75m x 2.49m)

Bedroom 3: 13'4 x 6'9 (4.07m x 2.06m)

### OUTSIDE

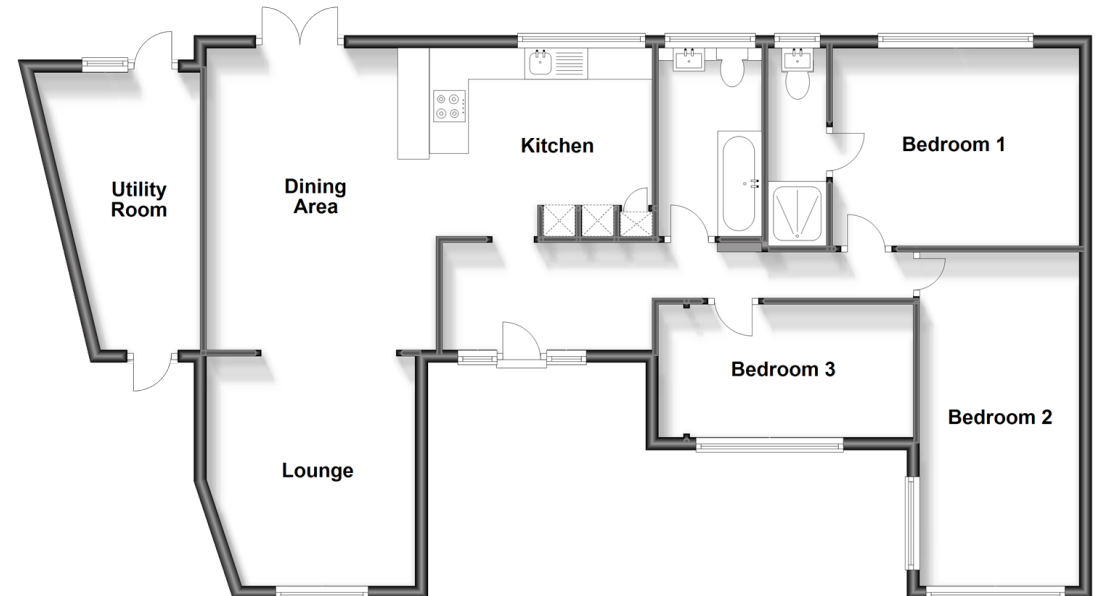
Front Garden

Rear Garden

Driveway

### Ground Floor

Approx. 104.0 sq. metres (1119.2 sq. feet)



**Call Ashington - 01903 891444 ■ [cubittandwest.co.uk](http://cubittandwest.co.uk)**

■ Legal advice should be taken to verify fixtures/fittings, planning, alterations and/or lease details  
 ■ Through a Homewise Home For Life Plan people aged 60+ can secure this property for up to 59% less, by purchasing a Lifetime Lease.

■ Appliances & services are untested, dimensions are approximate and floor plans are not to scale



23601112/20230710/HM1/HM1