



Price

£675,000

Freehold

4x  2x  2x 

**Covert Mead, Ashington,
West Sussex, RH20**

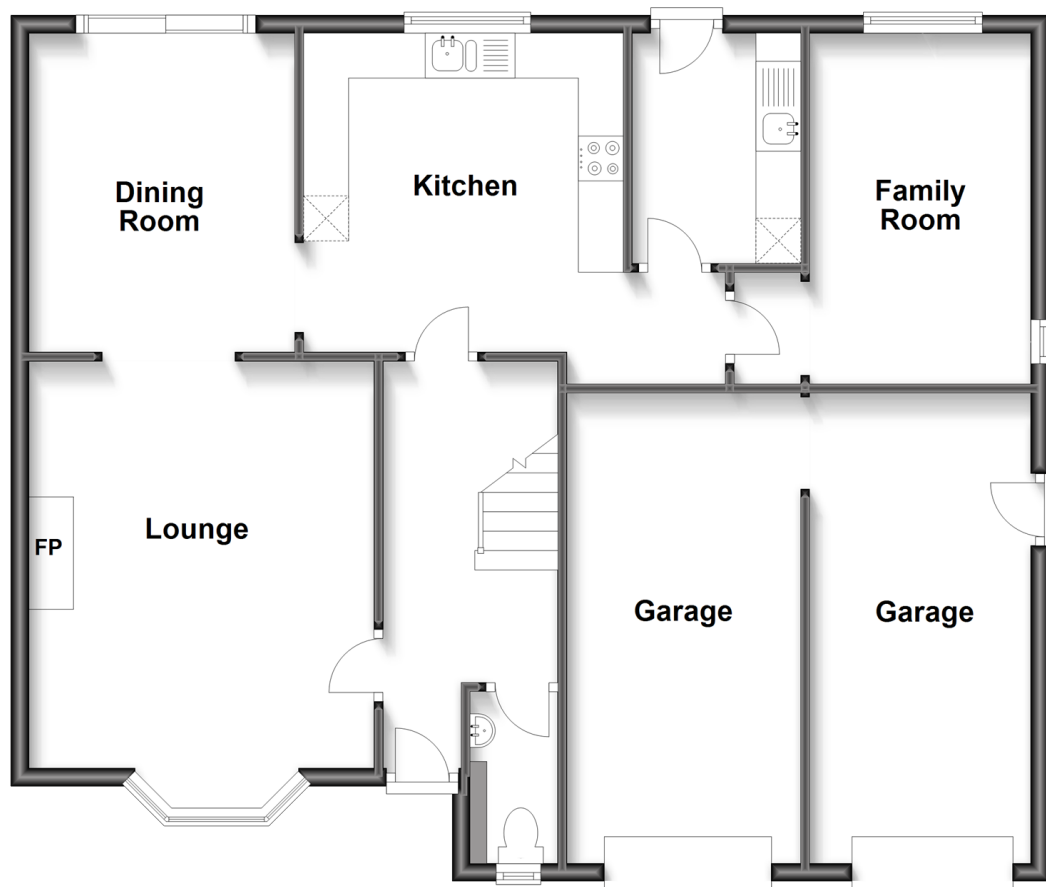
OVER 60?

Secure this property
for up to **59% less!**

cubitt & west
Helping you move forwards

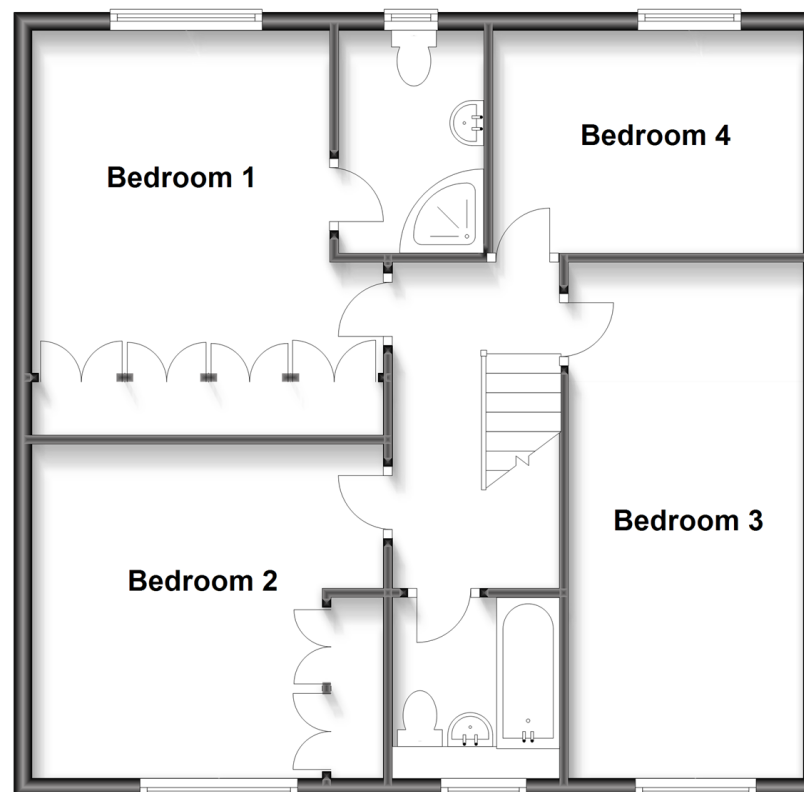
Ground Floor

Approx. 98.1 sq. metres (1055.6 sq. feet)



First Floor

Approx. 71.4 sq. metres (768.5 sq. feet)



Accommodation

GROUND FLOOR

Hall
Cloakroom
Lounge: 16'5 x 12'6 (5.01m x 3.81m)
Kitchen: 11'6 x 11'4 (3.51m x 3.46m)
Dining Room: 11'6 x 9'6 (3.51m x 2.90m)
Family Room: 12'9 x 8'0 (3.89m x 2.44m)
Utility: 8'4 x 6'2 (2.54m x 1.88m)

FIRST FLOOR

Landing
Bathroom
Bedroom 1: 12'5 up to fitted wardrobes x 10'9 (3.79m x 3.28m)
En-suite Shower Room
Bedroom 2: 18'2 x 8'7 (5.54m x 2.62m)
Bedroom 3: 12'8 x 12'1 into fitted wardrobes (3.86m x 3.69m)
Bedroom 4: 11'7 x 8'3 (3.53m x 2.52m)

OUTSIDE

Front Garden
Rear Garden
Double Garage
Driveway



Main features

- Spacious detached home in a quiet sought after location, easy access to school, parks and amenities
- Four good sized bedrooms
- Superb layout including lounge with bay window and log burning stove
- Double garage & driveway
- Fabulous secluded rear garden, ideal for families and for entertaining



Nearest Schools

Primary Schools: Ashington C of E School 0.2 miles,

Secondary Schools: Lower School, Rock Road site 4.7 miles, Upper School, Shooting Field site 4.7 miles, Steyning Grammar School 5.4 miles



Transport Information

Train Stations: Pulborough 5.4 miles, Billingshurst 6.2 miles, Amberley 6.9 miles



Address

Covert Mead, Ashington, West Sussex, RH20



Directions

For directions to this property please contact us.



cubitt&west
Helping you move forwards

Call Ashington Branch 01903 891444 ■ cubittandwest.co.uk



■ Legal advice should be taken to verify fixtures/fittings, planning, alterations and/or lease details ■ Appliances & services are untested, dimensions are approximate and floor plans are not to scale
■ Through a Homewise Home For Life Plan people aged 60+ can secure this property for up to 59% less, by purchasing a Lifetime Lease.



23601409/20230825/CR/HM1