



Price
£550,000

Freehold

4x  2x  2x 

**Cricketers Close,
Ashington, West Sussex,
RH20**

OVER 60?

Secure this property
for up to **59% less!**

cubitt & west
Helping you move forwards



Main features

- Attractive detached home built by Hillread homes
- Located in sought after cul de sac
- Great layout with kitchen/breakfast room and dining room over looking secluded rear garden
- Lounge with open fire
- Walking distance to shops, school and bus stops

Accommodation

GROUND FLOOR

Hall
Cloakroom
Dining Room: 10'5 x 10'5 (3.18m x 3.18m)
Kitchen/Breakfast Room: 12'2 x 10'5 (3.71m x 3.18m)
Sitting Room: 16'1 x 12'4 (4.91m x 3.76m)

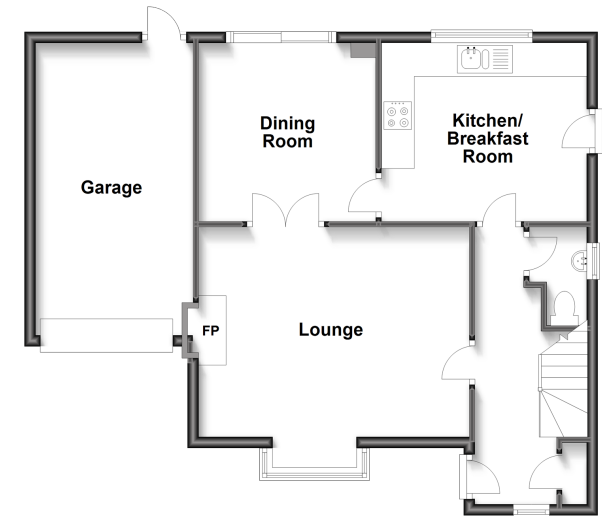
FIRST FLOOR

Landing
Family bathroom
Bedroom 1: 12'4 x 8'6 up to fitted wardrobes (3.76m x 2.59m)
En-suite shower
Bedroom 2: 9'4 x 9'2 up to fitted wardrobes (2.85m x 2.80m)
Bedroom 3: 10'4 x 6'8 up to fitted wardrobes (3.15m x 2.03m)
Bedroom 4: 9'4 x 7'2 up to fitted wardrobes (2.85m x 2.19m)

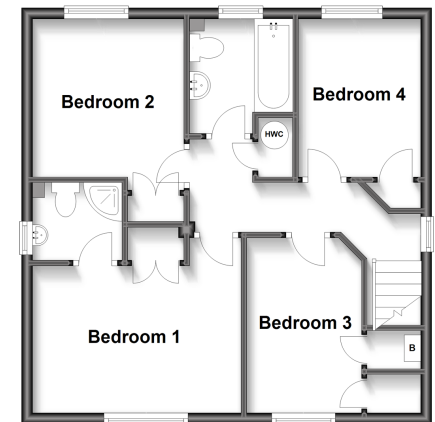
OUTSIDE

Driveway
Garage
Rear garden

Ground Floor
Approx. 68.3 sq. metres (735.7 sq. feet)



First Floor
Approx. 50.3 sq. metres (541.0 sq. feet)



Call Ashington - 01903 891444 ■ cubittandwest.co.uk

- Legal advice should be taken to verify fixtures/fittings, planning, alterations and/or lease details
- Appliances & services are untested, dimensions are approximate and floor plans are not to scale
- Through a Homewise Home For Life Plan people aged 60+ can secure this property for up to 59% less, by purchasing a Lifetime Lease.



23602295/20230706/CR/HM1