



**Price**  
**£425,000**

**Freehold**

3x  2x  2x 

**Mousdell Close,  
Ashington, West Sussex,  
RH20**

**OVER 60?**

Secure this property  
for up to **59% less!**



**Video Tour available**

**cubitt&west**  
Helping you move forwards





## Main features

- Semi-detached house on a small development on the edge of the village
- Kitchen/dining room with integrated appliances. Solar panel
- Walking distance to countryside and village amenities
- Secluded rear garden, driveway & parking space

## Accommodation

### GROUND FLOOR

Entrance Hall

Cloakroom

Kitchen/Dining Room: 16'10 x 8'7 (5.13m x 2.62m)

Lounge: 16'5 x 12'2 (5.01m x 3.71m)

### FIRST FLOOR

Landing

Bathroom

Bedroom 1: 13'2 into fitted wardrobes x 12'8 (4.02m x 3.86m)

En-suite shower

Bedroom 2: 9'9 x 9'4 (2.97m x 2.85m)

Bedroom 3: 9'4 x 6'5 (2.85m x 1.96m)

### OUTSIDE

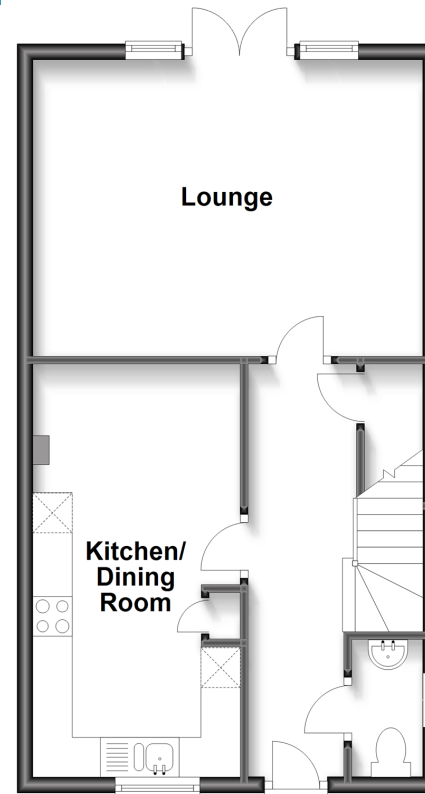
Driveway

Allocated Parking Space

Rear Garden

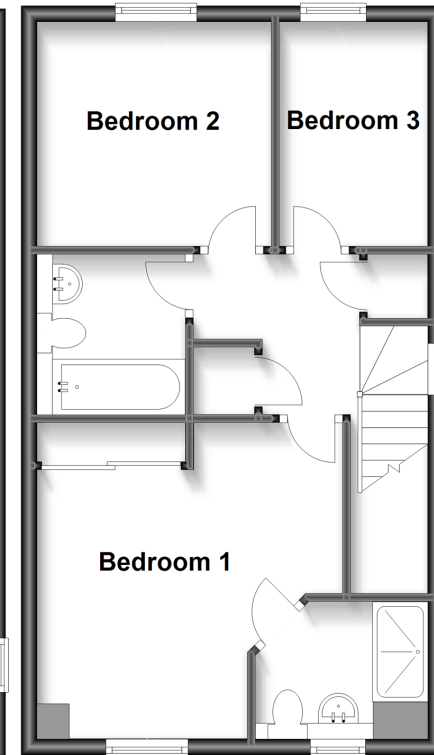
### Ground Floor

Approx. 44.6 sq. metres (480.4 sq. feet)



### First Floor

Approx. 44.6 sq. metres (480.4 sq. feet)



**Call Ashington - 01903 891444 ■ [cubittandwest.co.uk](http://cubittandwest.co.uk)**

- Legal advice should be taken to verify fixtures/fittings, planning, alterations and/or lease details
- Appliances & services are untested, dimensions are approximate and floor plans are not to scale
- Through a Homewise Home For Life Plan people aged 60+ can secure this property for up to 59% less, by purchasing a Lifetime Lease.



23602680/20230421/CR/HM1