

OVER 60?

Secure this property
for up to **59% less!**

cubitt
& west
FOR SALE
0203 895444

Price
£550,000
Freehold

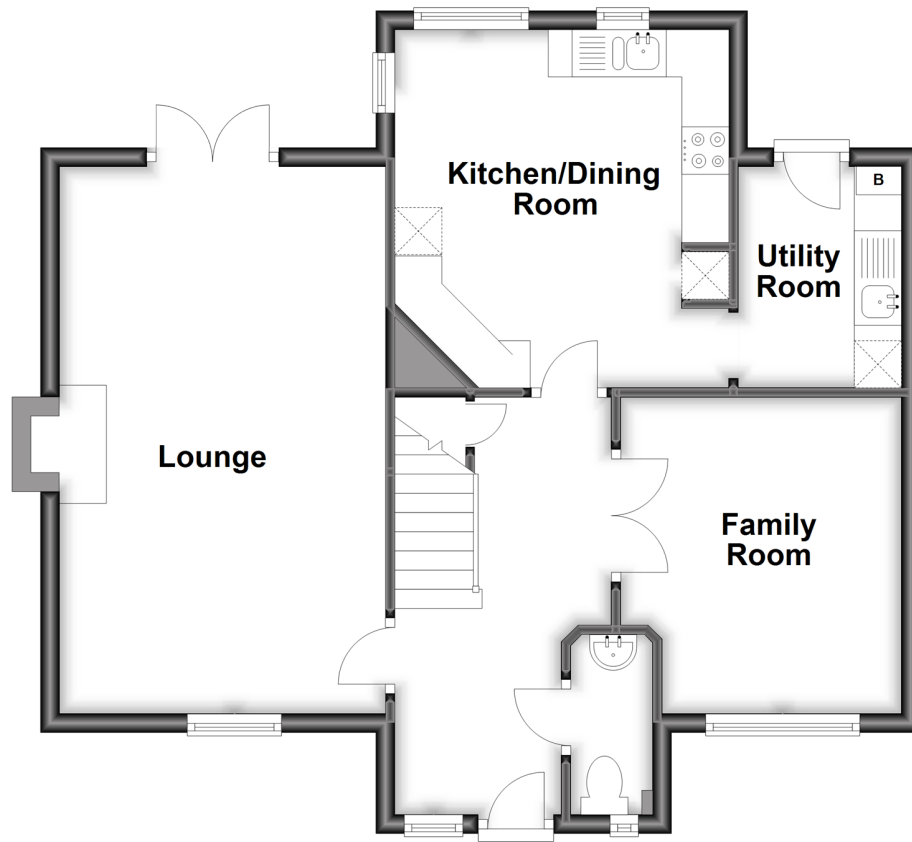
4x  2x  2x 

Chanctonbury, Ashington, West Sussex,
RH20

cubitt & west
Helping you move forwards

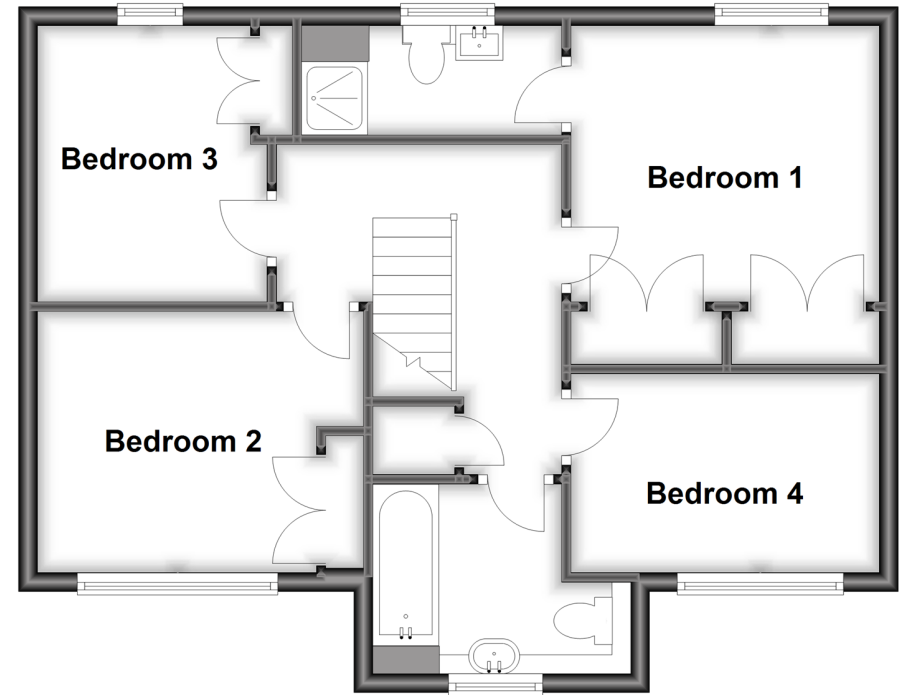
Ground Floor

Approx. 59.8 sq. metres (643.8 sq. feet)



First Floor

Approx. 55.1 sq. metres (593.6 sq. feet)



Accommodation

GROUND FLOOR

Entrance hall
Cloakroom
Lounge: 18'11 x 11'4 (5.77m x 3.46m)
Kitchen/Dining Room: 12'5 x 11'7 (3.79m x 3.53m)
Utility Room: 7'8 x 5'8 (2.34m x 1.73m)
Family Room: 10'9 x 9'9 (3.28m x 2.97m)

FIRST FLOOR

Landing
Family Bathroom
Bedroom 1: 10'8 x 10'0 up to fitted wardrobes (3.25m x 3.05m)
En Suite Shower
Bedroom 2: 11'8 x 9'2 up to fitted wardrobes (3.56m x 2.80m)

Bedroom 3: 9'8 x 8'2 up to fitted wardrobes (2.95m x 2.49m)
Bedroom 4: 10'9 x 6'9 (3.28m x 2.06m)

OUTSIDE

Double Width Driveway
Detached Double Garage
Front Garden
Rear Garden



Main features

- Attractive and spacious family home in a popular cul-de-sac in the heart of the village
- Large lounge with open fire
- First floor views of the South Downs
- Detached double garage and double width driveway
- Sunny aspect rear garden



Nearest Schools

Primary School: Ashington C of E Primary School

Secondary School: Steyning Grammar School; Lower School, Rock Road site 4.3 miles, Upper School, Shooting Field site 5.1 miles



Transport Information

Train Stations: Pulborough 5.7 miles, Billingshurst 6.4 miles,



Address

Chanctonbury, Ashington, West Sussex, RH20



Directions

For directions to this property please contact us.



cubitt&west
Helping you move forwards

Call Ashington Branch 01903 891444 ■ cubittandwest.co.uk



■ Legal advice should be taken to verify fixtures/fittings, planning, alterations and/or lease details ■ Appliances & services are untested, dimensions are approximate and floor plans are not to scale
■ Through a Homewise Home For Life Plan people aged 60+ can secure this property for up to 59% less, by purchasing a Lifetime Lease.



23603039/20230811/SEH/HM1