



Price
£630,000

Freehold

3x  2x  2x 

**Lamorna Close,
Washington, West
Sussex, RH20**

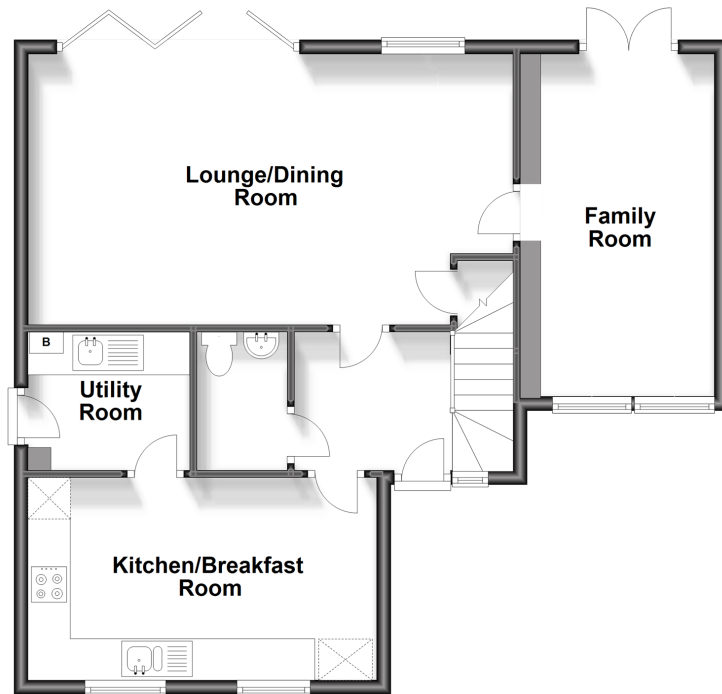
OVER 60?

Secure this property
for up to **59% less!**

cubitt&west
Helping you move forwards

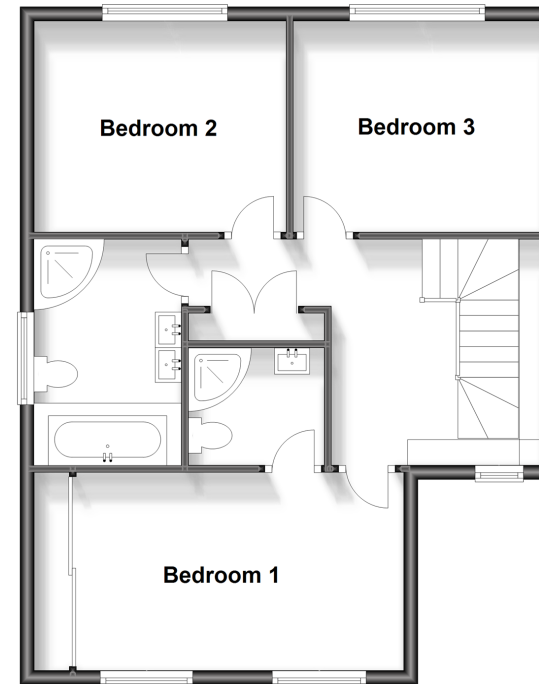
Ground Floor

Approx. 68.7 sq. metres (739.3 sq. feet)



First Floor

Approx. 60.3 sq. metres (649.6 sq. feet)



Accommodation

GROUND FLOOR

Entrance Hall

Cloakroom

Kitchen/Breakfast Room: 22'6 x 16'1 (6.86m x 4.91m)

Lounge: 22'8 x 12'7 (6.91m x 3.84m)

Family Room: 15'8 x 8'0 (4.78m x 2.44m)

Utility Room: 7'5 x 6'4 (2.26m x 1.93m)

FIRST FLOOR

Galleried Landing

Bathroom

Bedroom 1: 14'9 x 9'1 (4.50m x 2.77m)

En-suite Shower

Bedroom 2: 11'7 x 9'8 (3.53m x 2.95m)

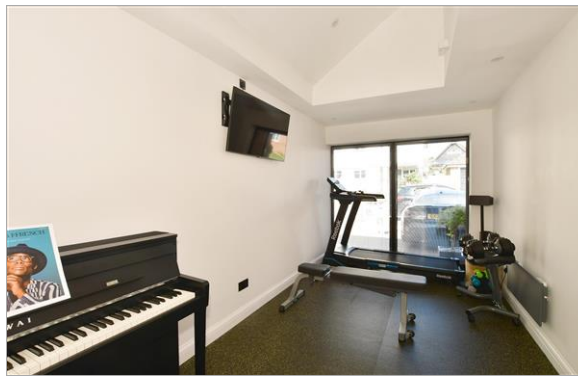
Bedroom 3: 11'6 x 9'8 (3.51m x 2.95m)

OUTSIDE

Front Garden

Driveway

Rear Garden



Main features

- Immaculately presented detached house on a small exclusive gated development
- High specification, luxury bathroom and ensuite shower
- Three double bedrooms
- 22'8 lounge plus family room
- Stunning and secluded landscaped rear garden, ideal for relaxing or entertaining



Nearest Schools

Primary Schools: Storrington Primary 3.1 miles, Thakeham Primary 2.0 miles, Ashington C of E School 3.0 miles, St Mary's C of E 1.2 miles
Secondary Schools: Steyning Grammar, Rock Road site 1.9 miles, Shooting Field site 5.5 miles ,



Transport Information

Train Stations: Pulborough 5.5 miles, Amberley 6.0 miles, Billingshurst 7.2 miles



Address

Lamorna Close, Washington, West Sussex, RH20



Directions

For directions to this property please contact us.



cubitt&west
Helping you move forwards

Call Ashington Branch 01903 891444 ■ cubittandwest.co.uk



■ Legal advice should be taken to verify fixtures/fittings, planning, alterations and/or lease details ■ Appliances & services are untested, dimensions are approximate and floor plans are not to scale
■ Through a Homewise Home For Life Plan people aged 60+ can secure this property for up to 59% less, by purchasing a Lifetime Lease.



23603360/20230912/CR/HM1