



Price
£325,000

Freehold

2x  1x  1x 

**The Mews, London
Road, Ashington, West
Sussex, RH20**

cubitt&west
Helping you move forwards



Main features

- Pretty end of terraced house in central cul de sac position
- Kitchen/dining room and downstairs cloakroom
- Two double bedrooms
- Off road parking
- Secluded rear garden

Accommodation

GROUND FLOOR

Hall
Cloakroom
Lounge: 13'7 x 11'8 minimum (4.14m x 3.56m)
Kitchen/Dining Room: 14'7 x 10'2 (4.45m x 3.10m)

FIRST FLOOR

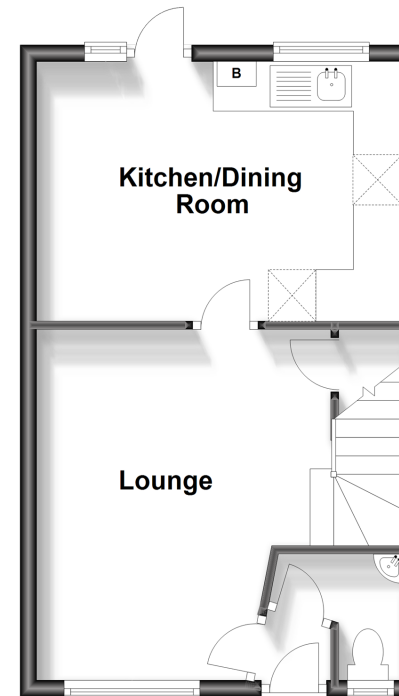
Landing
Bedroom 1: 12'6 x 11'10 up to fitted wardrobes (3.81m x 3.61m)
Bedroom 2: 13'2 x 8'2 (4.02m x 2.49m)
Bathroom

OUTSIDE

Rear Garden
Off road parking
Front Garden

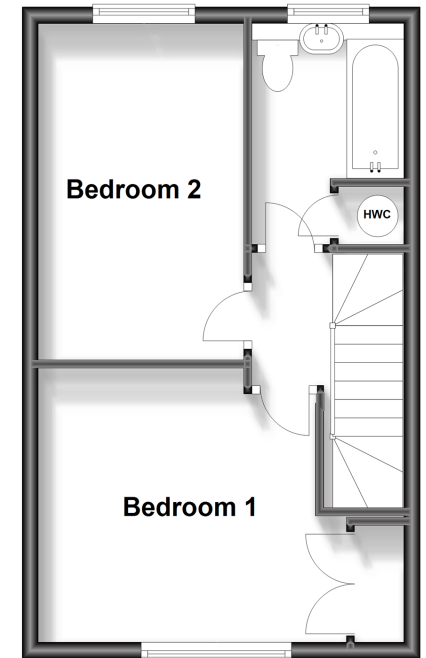
Ground Floor

Approx. 33.4 sq. metres (359.8 sq. feet)



First Floor

Approx. 33.4 sq. metres (359.8 sq. feet)



Call Ashington - 01903 891444 ■ cubittandwest.co.uk

- Legal advice should be taken to verify fixtures/fittings, planning, alterations and/or lease details
- Appliances & services are untested, dimensions are approximate and floor plans are not to scale



23603376/20231011/CNW/HM1