



OVER 60?

Secure this property
for up to **59% less!**

Price

£600,000

Freehold

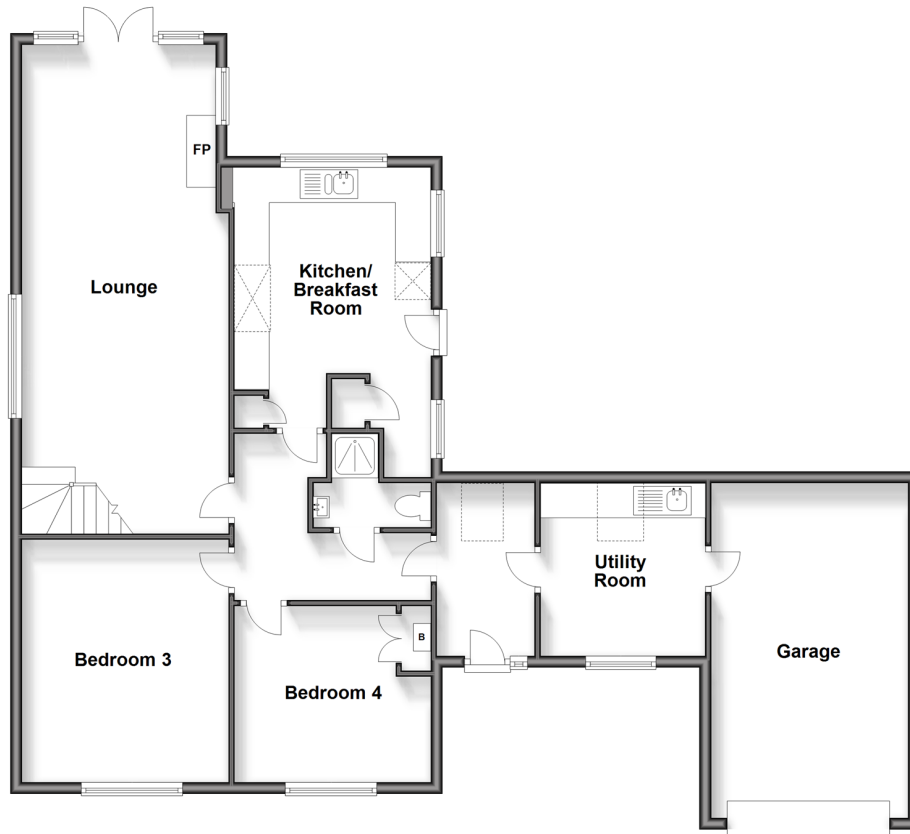
4x  2x  2x 

**Timberlea Close,
Ashington, West Sussex,
RH20**

cubitt&west
Helping you move forwards

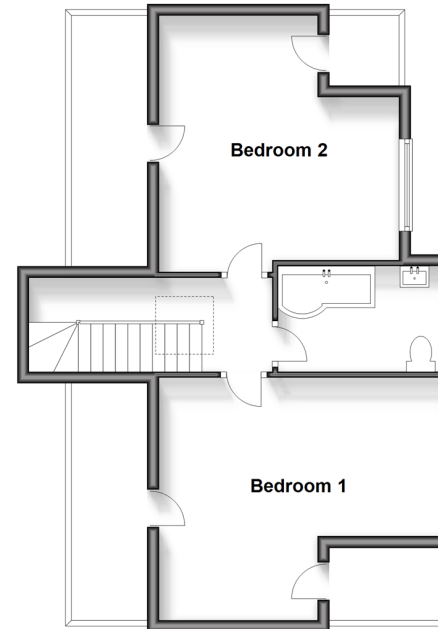
Ground Floor

Approx. 117.3 sq. metres (1262.3 sq. feet)



First Floor

Approx. 47.1 sq. metres (506.5 sq. feet)



Accommodation

GROUND FLOOR

Entrance Hall

Shower Room

Utility/Dog Grooming Room: 9'8 x 9'4
(2.95m x 2.85m)

Kitchen/Breakfast Room: 11'6 x 11'0 (3.51m x 3.36m)

Lounge: 28'5 x 11'9 (8.67m x 3.58m)

Bedroom 3: 13'8 x 11'7 (4.17m x 3.53m)

Bedroom 4: 11'2 x 10'1 into fitted
cupboard (3.41m x 3.08m)

FIRST FLOOR

Bathroom

Bedroom 1: 16'2 maximum x 13'9
maximum (4.93m x 4.19m)

Bedroom 2: 16'2 maximum x 13'9
maximum (4.93m x 4.19m)

OUTSIDE

Front Garden

Large Driveway

Garage: 18'2 x 10'8 (5.54m x 3.25m)

Rear Garden



Main features

- Detached chalet style home in quiet cul de sac in the heart of the village
- Spacious accommodation to suit growing families or multi generational living
- Four double bedrooms
- Good sized plot including secluded rear garden and garage
- 28'5 lounge with feature log burner



Nearest Schools

Primary Schools: Ashington C of E School 0.4 miles,

Secondary Schools: Steyning Grammer School Lower School, Rock Road site 3.3 miles, Upper School, Shooting Field site 5.2 miles



Transport Information

Train Stations: Pulborough 5.6 miles, Billingshurst 6.2 miles, Amberley 7.0 miles



Address

Timberlea Close, Ashington, West Sussex, RH20



Directions

For directions to this property please contact us.



cubitt&west
Helping you move forwards

Call Ashington Branch 01903 891444 ■ cubittandwest.co.uk



■ Legal advice should be taken to verify fixtures/fittings, planning, alterations and/or lease details ■ Appliances & services are untested, dimensions are approximate and floor plans are not to scale
■ Through a Homewise Home For Life Plan people aged 60+ can secure this property for up to 59% less, by purchasing a Lifetime Lease.



23603377/20240318/CR/HM1