



**Price**  
**£450,000**

**Freehold**

3x  1x  2x 

**Fairfield Road,  
Ashington, West Sussex,  
RH20**

**OVER 60?**

Secure this property  
for up to **59% less!**



**cubitt & west**  
Helping you move forwards





## Main features

- Very well presented end of terrace home in the heart of the village
- Superb refitted kitchen, bathroom, both with underfloor heating
- Conservatory overlooking the attractive rear garden
- Garage plus long driveway
- Easy access to parks, school, shops and bus stop

## Accommodation

### GROUND FLOOR

Hall

Kitchen: 7'7 x 7'2 (2.31m x 2.19m)

Lounge: 13'6 x 11'8 (4.12m x 3.56m)

Dining Room: 10'10 up to fitted cupboard x 10'0 (3.30m x 3.05m)

Conservatory: 8'7 x 8'2 (2.62m x 2.49m)

### FIRST FLOOR

Landing

Bathroom

Bedroom 1: 13'7 x 10'0 (4.14m x 3.05m)

Bedroom 2: 10'0 x 10'0 (3.05m x 3.05m)

Bedroom 3: 8'8 x 7'6 into fitted wardrobes (2.64m x 2.29m)

### OUTSIDE

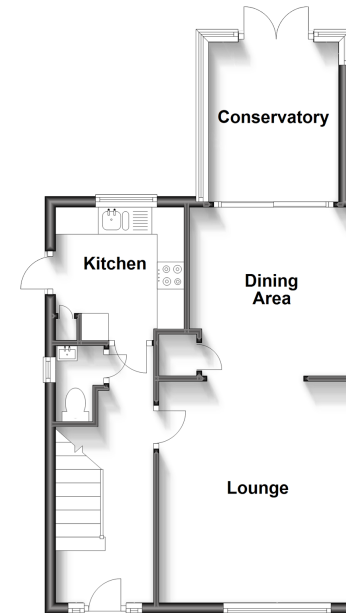
Front Garden

Driveway

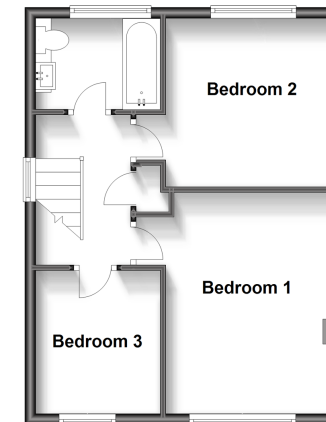
Garage

Rear Garden

**Ground Floor**  
Approx. 48.0 sq. metres (517.0 sq. feet)



**First Floor**  
Approx. 40.6 sq. metres (437.1 sq. feet)



**Call Ashington - 01903 891444 ■ [cubittandwest.co.uk](http://cubittandwest.co.uk)**

- Legal advice should be taken to verify fixtures/fittings, planning, alterations and/or lease details
- Appliances & services are untested, dimensions are approximate and floor plans are not to scale
- Through a Homewise Home For Life Plan people aged 60+ can secure this property for up to 59% less, by purchasing a Lifetime Lease.



23603416/20230603/CR/HM1