



**Price**  
**£595,000**

**Freehold**

4x  1x  3x 

**Brook Close,  
Storrington, West  
Sussex, RH20**

**OVER 60?**

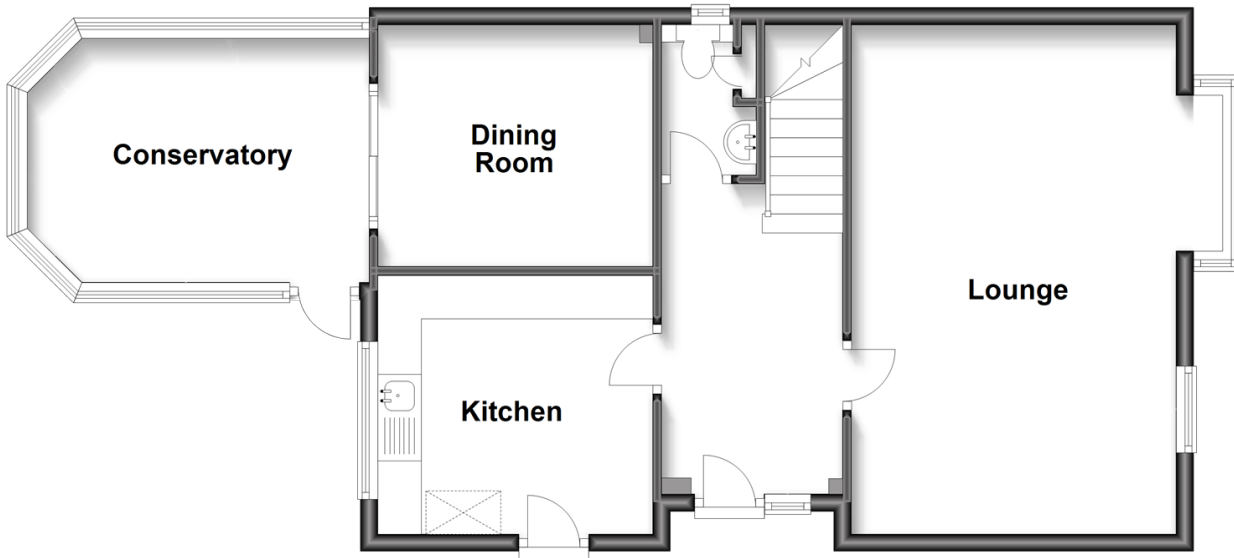
Secure this property  
for up to **59% less!**

**cubitt&west**  
Helping you move forwards



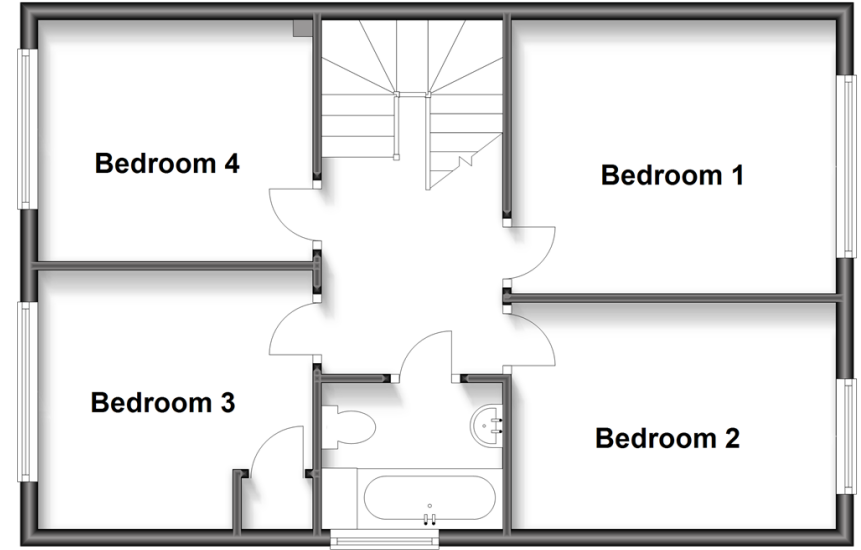
## Ground Floor

Approx. 64.3 sq. metres (692.5 sq. feet)



## First Floor

Approx. 54.8 sq. metres (589.7 sq. feet)



## Accommodation

### GROUND FLOOR

Hallway  
Lounge: 21'6 x 17'5 into bay (6.56m x 5.31m)  
Kitchen: 16'3 x 12'9 (4.96m x 3.89m)  
Down W/C  
Dining Room: 16'10 x 10'5 (5.13m x 3.18m)  
Conservatory: 19'3 x 12'4 (5.87m x 3.76m)

### FIRST FLOOR

Bedroom 1: 12'5 x 10'5 (3.79m x 3.18m)  
Bedroom 2: 13'10 x 13'6 (4.22m x 4.12m)  
Bedroom 3: 16'5 x 12'11 (5.01m x 3.94m)  
Bedroom 4: 13'12 x 13'8 (4.27m x 4.17m)  
Family Bathroom

### OUTSIDE

Garage



## Main features

- Corner plot/ Large rear private garden.
- Garage and off road parking for several cars.
- 4 Generous sized bedrooms.
- Possibility to extended as your family grows subject to the necessary planning consent.
- No through road in sought after Village location.



### Nearest Schools

Thakeham primary School-0.25 miles  
 Storrington primary School- 0.85 miles  
 St Mary's CofE Primary School-1.94 miles  
 Windlesham House School- 2.61 miles  
 Steyning Grammer School, Rock Road Campus -0.4 miles



### Transport Information

Train Stations: Pulborough 3.8 miles, Amberley 4.8 miles, Billingshurst 6.2 miles



### Address

Brook Close, Storrington, West Sussex, RH20



### Directions

For directions to this property please contact us.







**cubitt&west**  
Helping you move forwards

Call Ashington Branch 01903 891444 ■ [cubittandwest.co.uk](https://cubittandwest.co.uk)



■ Legal advice should be taken to verify fixtures/fittings, planning, alterations and/or lease details ■ Appliances & services are untested, dimensions are approximate and floor plans are not to scale  
■ Through a Homewise Home For Life Plan people aged 60+ can secure this property for up to 59% less, by purchasing a Lifetime Lease.



23603426/20230130/CNW/CNW