



Price
£325,000

Freehold

2x  1x  1x 

**Pound Lane, Upper
Beeding, Steyning, West
Sussex, BN44**

OVER 60?

Secure this property
for up to **59% less!**

cubitt & west
Helping you move forwards



Main features

- Charming 1930s home within walking distance to shops, countryside and schools
- Superb kitchen/dining room
- Lounge with open fire
- Fabulous views at the front
- Double driveway, front garden with vegetable/flower beds plus lovely rear garden

Accommodation

GROUND FLOOR

Porch
 Lounge: 12'6 x 12'2 (3.81m x 3.71m)
 Kitchen/Dining Room: (L-shaped) 14'11 x 14'5 (4.55m x 4.40m) plus 6'4 x 7'4 (1.93m x 2.24m)
 Utility
 Cloakroom

FIRST FLOOR

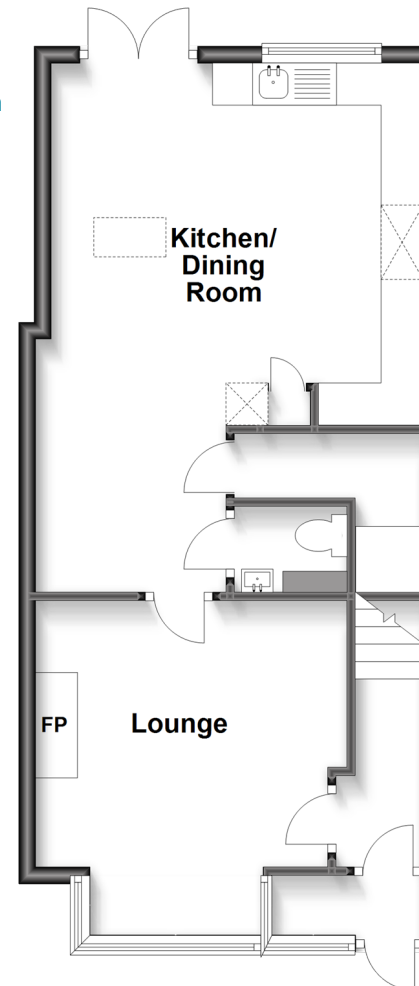
Landing
 Bathroom
 Bedroom 1: 11'1 x 9'1 (3.38m x 2.77m)
 Bedroom 2: 9'6 x 9'4 (2.90m x 2.85m)

OUTSIDE

Front Garden
 Rear Garden
 Patio
 Shed
 Log Store
 Driveway

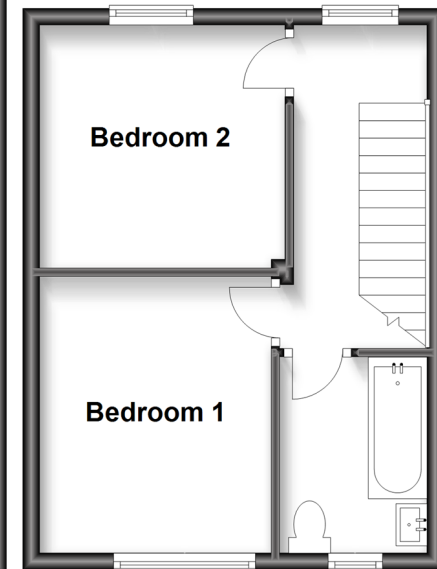
Ground Floor

Approx. 46.6 sq. metres (501.8 sq. feet)



First Floor

Approx. 29.0 sq. metres (311.7 sq. feet)



Call Ashington - 01903 891444 ■ cubittandwest.co.uk

- Legal advice should be taken to verify fixtures/fittings, planning, alterations and/or lease details
- Appliances & services are untested, dimensions are approximate and floor plans are not to scale
- Through a Homewise Home For Life Plan people aged 60+ can secure this property for up to 59% less, by purchasing a Lifetime Lease.



23603432/20240427/CR/CNW