



Price
£475,000

Freehold

3x  2x  1x 

**Linfield Lane,
Ashington, West Sussex,
RH20**

OVER 60?

Secure this property
for up to **59% less!**

cubitt&west
Helping you move forwards



Main features

- Attractive house built by Charles Church in 2007
- Small private close on outskirts of popular village
- Easy access to shops, countryside and A24
- Secluded rear garden inc hot tub
- Garage & double width driveway

Accommodation

GROUND FLOOR

Hall
Cloakroom
Kitchen: 13'0 x 7'9 (3.97m x 2.36m)
Lounge/Dining room: 16'8 x 15'2 (5.08m x 4.63m)

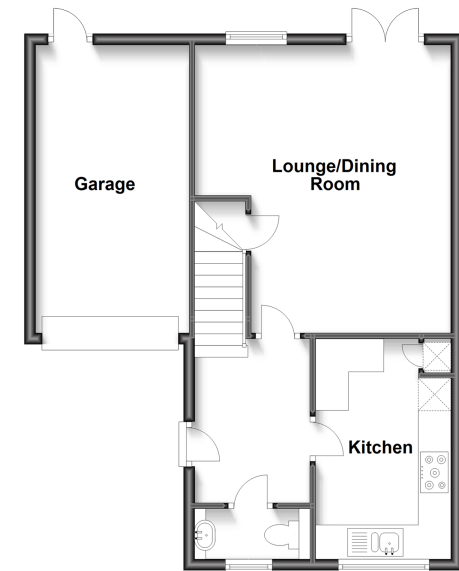
FIRST FLOOR

Landing
Bathroom
Bedroom 1: 13'4 into fitted wardrobes x 8'4 (4.07m x 2.54m)
En suite shower
Bedroom 2: 13'1 x 8'0 (3.99m x 2.44m)
Bedroom 3: 9'4 x 6'9 (2.85m x 2.06m)

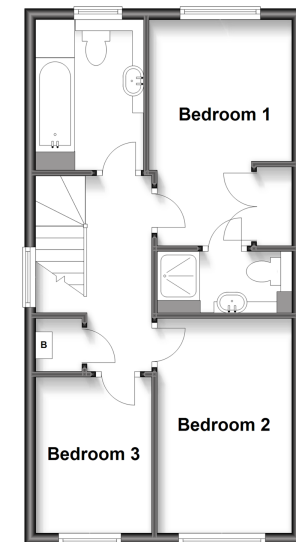
OUTSIDE

Garage
Double Width Driveway
Front garden
Rear garden
Hot Tub

Ground Floor
Approx. 57.1 sq. metres (614.1 sq. feet)



First Floor
Approx. 43.0 sq. metres (462.5 sq. feet)



Call Ashington - 01903 891444 ■ cubittandwest.co.uk

- Legal advice should be taken to verify fixtures/fittings, planning, alterations and/or lease details
- Appliances & services are untested, dimensions are approximate and floor plans are not to scale
- Through a Homewise Home For Life Plan people aged 60+ can secure this property for up to 59% less, by purchasing a Lifetime Lease.



23603434/20230517/CNW/HM1