



Price

£440,000

Freehold

2x  2x  2x 

**Hillcrest Drive,
Ashington, West Sussex,
RH20**

OVER 60?

Secure this property
for up to **59% less!**

cubitt&west
Helping you move forwards



Main features

- Superb bungalow ideal for retirement. No chain
- Walking distance to shops, bus stops and chemist
- Lovely modern fitted kitchen
- Good sized lounge with separate dining room ideal for entertaining
- Detached garage and pretty, paved, sunny aspect gardens

Accommodation

GROUND FLOOR

Hall

Inner Hall

Shower Room

Kitchen: 11'4 x 7'8 (3.46m x 2.34m)

Lounge: 14'9 x 13'5 (4.50m x 4.09m)

Conservatory: 7'1 x 6'6 (2.16m x 1.98m)

Bedroom 1: 13'8 x 10'1 (4.17m x 3.08m)

Dining Room: 13'9 into fitted cupboard x 10'2 maximum (4.19m x 3.10m)

FIRST FLOOR

Bedroom 2: 21'0 x 11'5 (6.41m x 3.48m)

En suite Bathroom

OUTSIDE

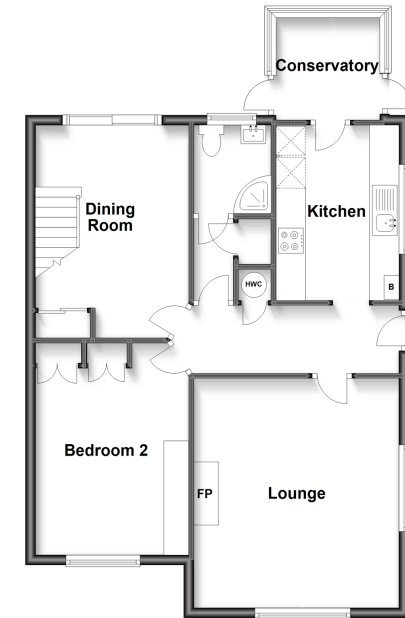
Front Garden

Rear Garden

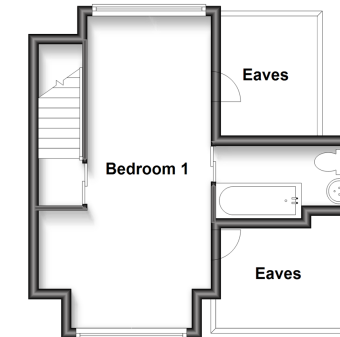
Garage

Driveway

Ground Floor
Approx. 71.2 sq. metres (766.6 sq. feet)



First Floor
Approx. 23.8 sq. metres (256.2 sq. feet)



Call Ashington - 01903 891444 ■ cubittandwest.co.uk

- Legal advice should be taken to verify fixtures/fittings, planning, alterations and/or lease details
- Appliances & services are untested, dimensions are approximate and floor plans are not to scale
- Through a Homewise Home For Life Plan people aged 60+ can secure this property for up to 59% less, by purchasing a Lifetime Lease.



23603492/20230908/CR/HM1