



Price
£350,000

Freehold

3x  2x  1x 

**Mousdell Close,
Ashington, Pulborough,
West Sussex, RH20**

OVER 60?

Secure this property
for up to **59% less!**

cubitt&west
Helping you move forwards



Main features

- Useful parking for 2 cars
- En-suite to main bedroom
- Secluded rear garden
- Tucked away on a small development on the edge of the village
- Walking distance to local amenities, plus countryside walks

Accommodation

GROUND FLOOR

Hall
Cloakroom
Kitchen Diner: 15'3 x 8'6 (4.65m x 2.59m)
Lounge: 16'3 x 12'1 (4.96m x 3.69m)

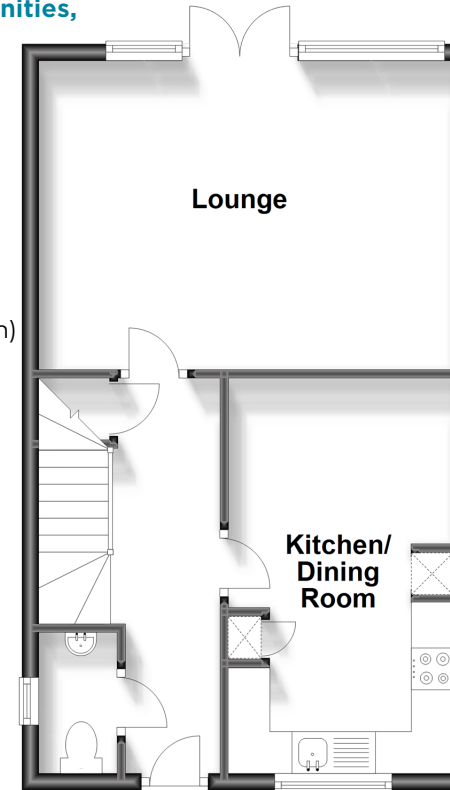
FIRST FLOOR

Landing
Bathroom
Bedroom 1: 12'6 x 11'5 into fitted wardrobes (3.81m x 3.48m)
En-suite
Bedroom 2: 9'7 x 9'4 (2.92m x 2.85m)
Bedroom 3: 9'3 x 6'3 (2.82m x 1.91m)

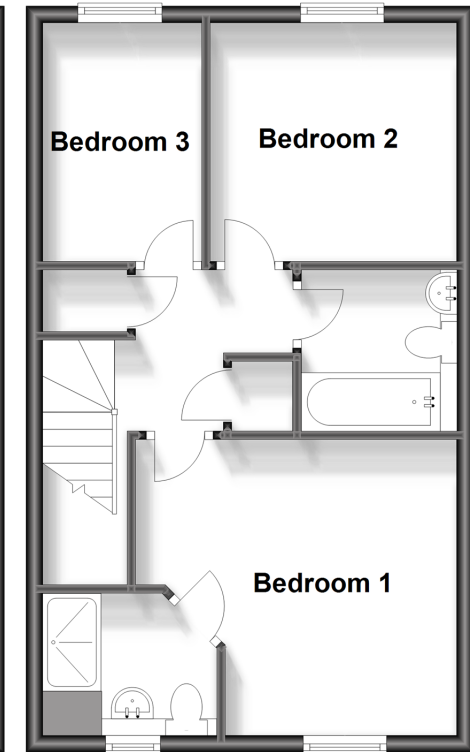
OUTSIDE

Parking for 2 cars
Rear Garden

Ground Floor
Approx. 42.4 sq. metres (456.0 sq. feet)



First Floor
Approx. 42.4 sq. metres (456.0 sq. feet)



Call Ashington - 01903 891444 ■ cubittandwest.co.uk

- Legal advice should be taken to verify fixtures/fittings, planning, alterations and/or lease details
- Appliances & services are untested, dimensions are approximate and floor plans are not to scale
- Through a Homewise Home For Life Plan people aged 60+ can secure this property for up to 59% less, by purchasing a Lifetime Lease.



23603507/20240212/CR/CNW