



Price

£650,000

Freehold

3x  2x  1x 

**Rosemary Avenue,
Steyping, West Sussex,
BN44**

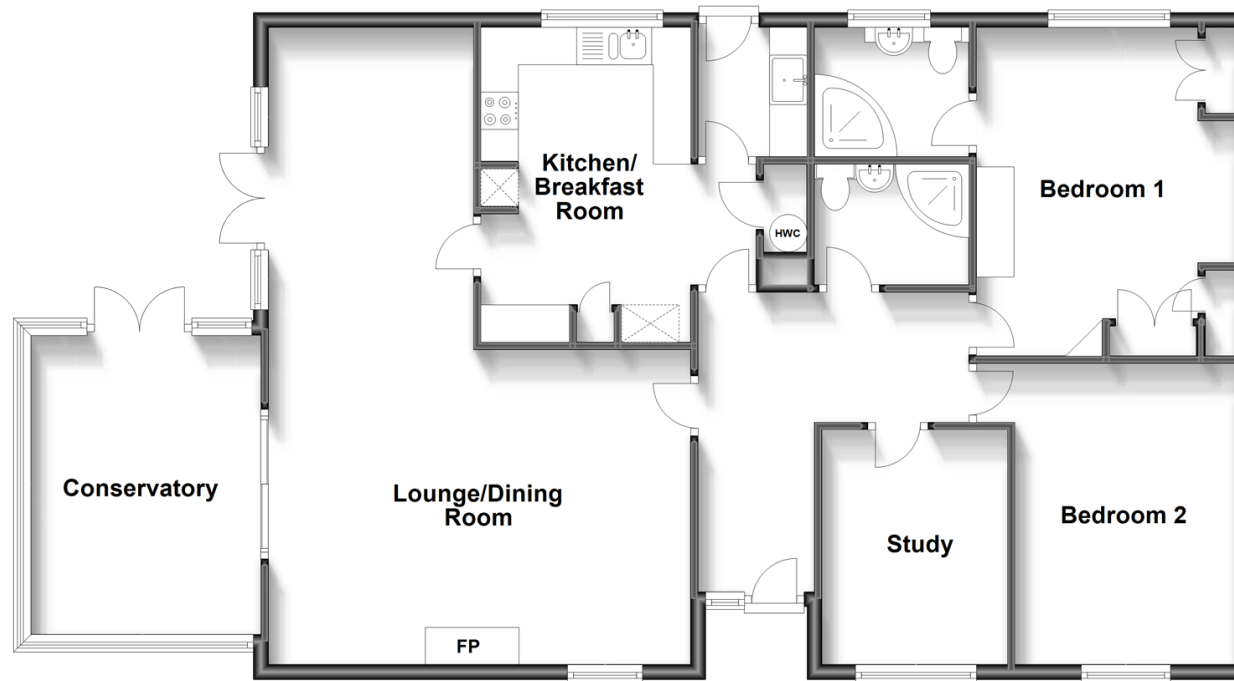
OVER 60?

Secure this property
for up to **59% less!**

cubitt&west
Helping you move forwards

Ground Floor

Approx. 121.0 sq. metres (1302.1 sq. feet)



Accommodation

GROUND FLOOR

Hall

Shower Room

Lounge/Dining Room: (L-shaped) 18'5 x 13'8 (5.62m x 4.17m) plus 14'4 x 9'0 (4.37m x 2.75m)

Conservatory: 12'6 x 9'3 (3.81m x 2.82m)

Kitchen/Breakfast Room: 14'1 x 12'0 maximum (4.30m x 3.66m)

Utility Room: 5'7 x 4'8 (1.70m x 1.42m)

Bedroom 1: 14'4 x 11'3 up to fitted wardrobes (4.37m x 3.43m)

Ensuite Shower Room

Bedroom 2: 13'5 x 9'7 (4.09m x 2.92m)

Study/Bedroom 3: 10'3 x 8'2 (3.13m x 2.49m)

OUTSIDE

Rear Garden

Summerhouse

Shed

Garage: 17'4 x 15'1 (5.29m x 4.60m)

Large Driveway



Main features

- Spacious detached bungalow
- Located in a superb central yet tucked away position
- Generous room sizes
- Delightful well stocked private rear garden
- Large garage and driveway



Nearest Schools

Primary School: Steyning CofE Lower School 4.3 miles

Secondary School: Steyning Grammar School, Lower School, Rock Road Site 7.3 miles; The Towers 2.1 miles, Steyning Grammer School, Upper School, Shooting Field



Transport Information

Train Stations: Shoreham-by-Sea 5.3 miles, Amberley 9.7 miles, Pulborough 9.7 miles, Billingshurst 10. miles



Address

Rosemary Avenue, Steyning, West Sussex, BN44



Directions

For directions to this property please contact us.



cubitt&west
Helping you move forwards

Call Ashington Branch 01903 891444 ■ cubittandwest.co.uk



■ Legal advice should be taken to verify fixtures/fittings, planning, alterations and/or lease details ■ Appliances & services are untested, dimensions are approximate and floor plans are not to scale
■ Through a Homewise Home For Life Plan people aged 60+ can secure this property for up to 59% less, by purchasing a Lifetime Lease.



23603512/20230703/HM1/HM1