



Price

£850,000

Freehold

5x  3x  3x 

**Storrington Road,
Thakeham, West Sussex,
RH20**

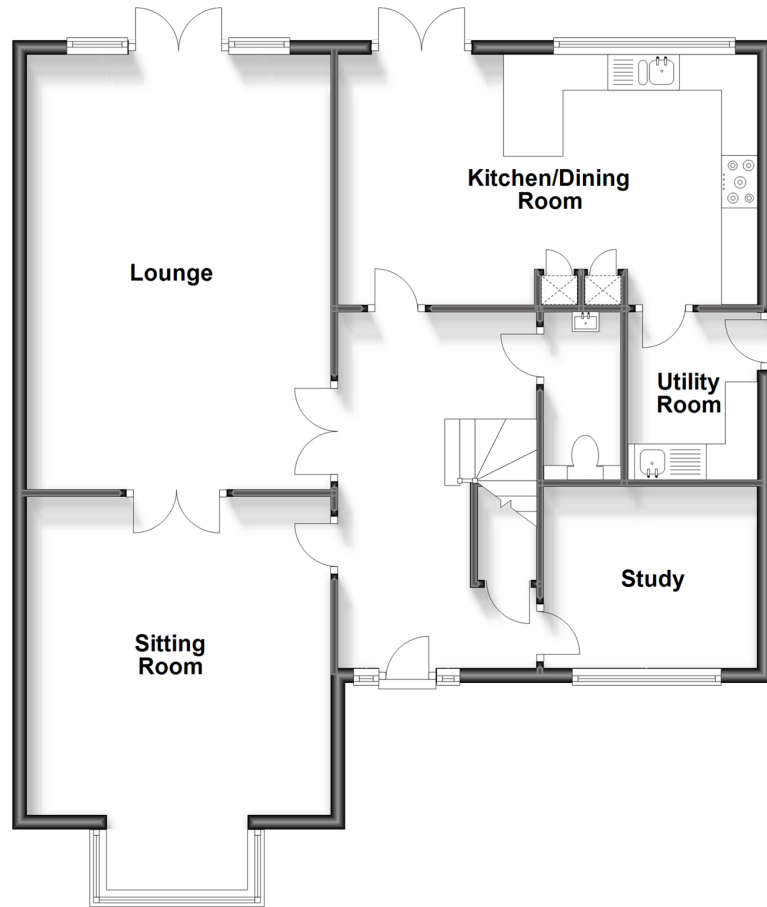
OVER 60?

Secure this property
for up to **59% less!**

cubitt&west
Helping you move forwards

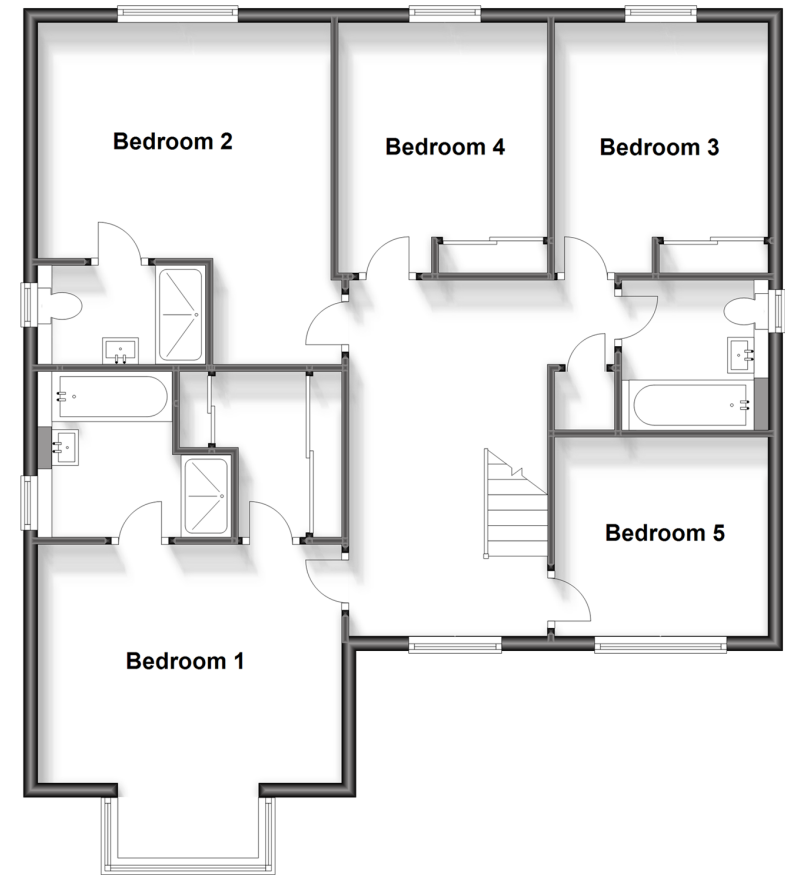
Ground Floor

Approx. 97.3 sq. metres (1047.6 sq. feet)



First Floor

Approx. 97.2 sq. metres (1045.8 sq. feet)



Accommodation

GROUND FLOOR

Hall
Cloakroom
Study: 9'8 x 8'3 (2.95m x 2.52m)
Sitting Room: 17'2 x 13'9 (5.24m x 4.19m)
Lounge: 19'9 x 13'9 (6.02m x 4.19m)
Kitchen/Dining Room: 19'5 x 11'5 (5.92m x 3.48m)
Utility: 7'6 x 5'9 (2.29m x 1.75m)

FIRST FLOOR

Galleried Landing
Family Bathroom
Bedroom 1: 13'8 x 13'4 (4.17m x 4.07m)
En suite Bathroom
Dressing Room: 8'1 x 7'6 (2.47m x 2.29m)
Bedroom 2: 13'9 x 10'8 into fitted wardrobes (4.19m x 3.25m)

En suite Shower Room

Bedroom 3: 11'5 x 9'7 into fitted wardrobes (3.48m x 2.92m)
Bedroom 4: 11'5 x 9'4 into fitted wardrobes (3.48m x 2.85m)
Bedroom 5: 9'9 x 9'1 (2.97m x 2.77m)

OUTSIDE

Front Garden
Double Driveway
Double Garage
Side Garden
Rear Garden



Main features

- Spacious home built by Crest Nicholson as part of their Executive Collection
- Envidable position tucked away down a tree lined avenue leading to just three luxury homes
- Immaculately presented with a superb layout perfect for families or combined generations
- Sunny aspect rear garden ideal for relaxing
- Double garage, plenty of parking



Nearest Schools

Primary School: Thakeham Primary School 0.4 miles

Secondary School: Steyning Grammar School; Lower School, Rock Road site 0.4 miles, Upper School, Shooting Field site 7.5 miles



Transport Information

Train Stations: Pulborough 3.9 miles, Amberley 5.2 miles, Billingshurst 6.0 miles



Address

Storrington Road, Thakeham, West Sussex, RH20



Directions

For directions to this property please contact us.



cubitt&west
Helping you move forwards

Call Ashington Branch 01903 891444 ■ cubittandwest.co.uk



- Legal advice should be taken to verify fixtures/fittings, planning, alterations and/or lease details
- Appliances & services are untested, dimensions are approximate and floor plans are not to scale
- Through a Homewise Home For Life Plan people aged 60+ can secure this property for up to 59% less, by purchasing a Lifetime Lease.



23603520/20231109/CR/HM1