



Price
£750,000

Freehold

4x  3x  3x 

**Watermeadow Lane,
Storrington,
Pulborough, West
Sussex, RH20**

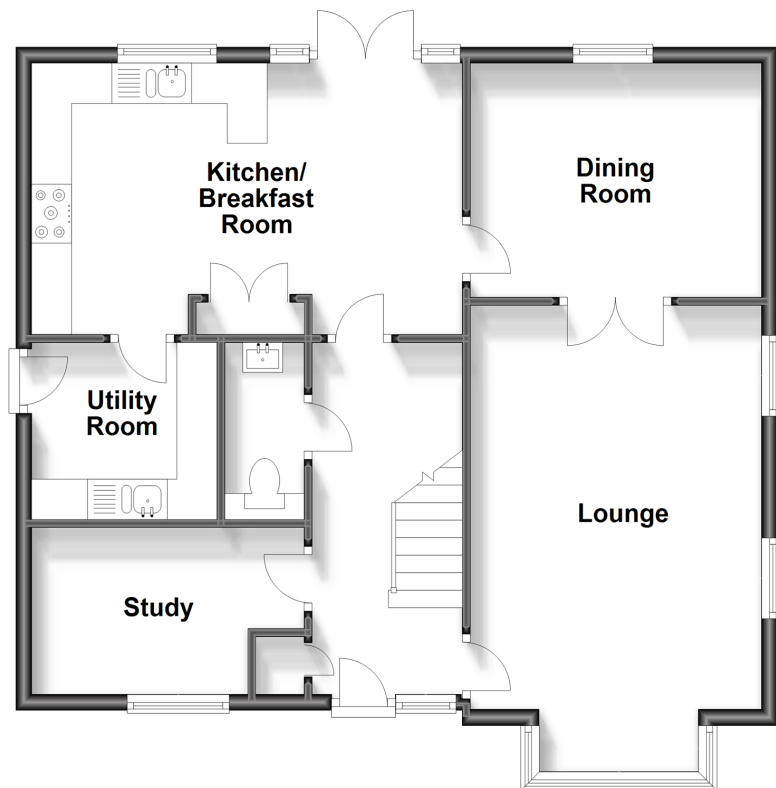
OVER 60?

Secure this property
for up to **59% less!**

cubitt&west
Helping you move forwards

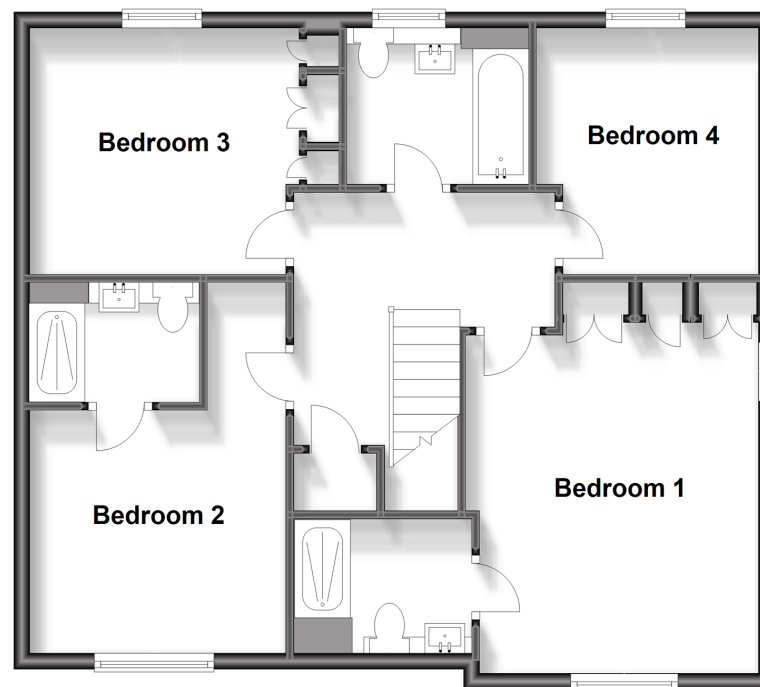
Ground Floor

Approx. 73.7 sq. metres (792.8 sq. feet)



First Floor

Approx. 71.7 sq. metres (772.0 sq. feet)



Accommodation

GROUND FLOOR

Hall

Kitchen/Diner: 17'5 x 10'7 (5.31m x 3.23m)

Utility Room: 7'6 x 6'2 (2.29m x 1.88m)

Dining Room: 12'0 x 9'5 (3.66m x 2.87m)

Lounge: 18'9 x 11'9 (5.72m x 3.58m)

Study: 11'1 x 7'4 (3.38m x 2.24m)

Landing

Family Bathroom

Bedroom 1: 14'0 x 11'3 up to fitted wardrobes (4.27m x 3.43m)

En-suite

Bedroom 2: 10'7 x 9'8 (3.23m x 2.95m)

En-suite

Bedroom 3: 10'8 x 9'8 (3.25m x 2.95m)

Bedroom 4: 10'0 x 9'0 (3.05m x 2.75m)

OUTSIDE

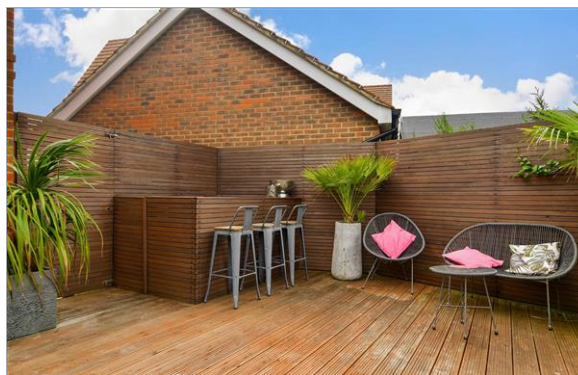
Front Garden

Driveway

Garage

Rear Garden

FIRST FLOOR



Main features

- Superb detached house built by Crest Nicholson in approx 2007 enjoying a 'tucked away' position
- Four generous bedrooms (2 with en suites)
- Large secluded landscaped rear garden enjoying a sunny aspect
- Very well presented accommodation
- Garage and driveway



Nearest Schools

Primary Schools: Storrington Primary 1.5 miles, Thakeham Primary 0.5 miles, Ashington C of E School 3.8 miles, St Mary's C of E Primary 4.9 miles
 Secondary Schools: Steyning Grammar Rock Road site 0.5 miles, Steyning Grammar Shooting Field site 7.2 miles



Transport Information

Train Stations: Pulborough 3.9 miles, Amberley 4.9 miles, Billingshurst 6.1 miles



Address

Watermeadow Lane, Storrington, Pulborough, West Sussex, RH20



Directions

For directions to this property please contact us.



cubitt&west
Helping you move forwards

Call Ashington Branch 01903 891444 ■ cubittandwest.co.uk



- Legal advice should be taken to verify fixtures/fittings, planning, alterations and/or lease details
- Appliances & services are untested, dimensions are approximate and floor plans are not to scale
- Through a Homewise Home For Life Plan people aged 60+ can secure this property for up to 59% less, by purchasing a Lifetime Lease.



23603526/20230815/CNW/HM1