



OVER 60?

Secure this property
for up to **59% less!**

Price

£450,000

Freehold

3x  2x  1x 

**Magnolia, London Road,
Ashington, West Sussex,
RH20**

cubitt&west
Helping you move forwards



Main features

- Extremely well presented house in non-estate position
- Large secluded rear garden
- Stunning kitchen with integrated appliances.
- Refitted family bathroom and en-suite shower room
- Walking distance to shops, bus stops and school

Accommodation

GROUND FLOOR

Hall

Kitchen: 13'0 x 11'7 (3.97m x 3.53m)

Lounge/Dining Room: 22'8 x 13'0 (6.91m x 3.97m)

FIRST FLOOR

Landing

Bathroom

Bedroom 1: 16'8 x 10'9 (5.08m x 3.28m)

En-suite Shower Room

Bedroom 2: 14'1 x 8'0 (4.30m x 2.44m)

Bedroom 3: 8'2 x 8'0 (2.49m x 2.44m)

OUTSIDE

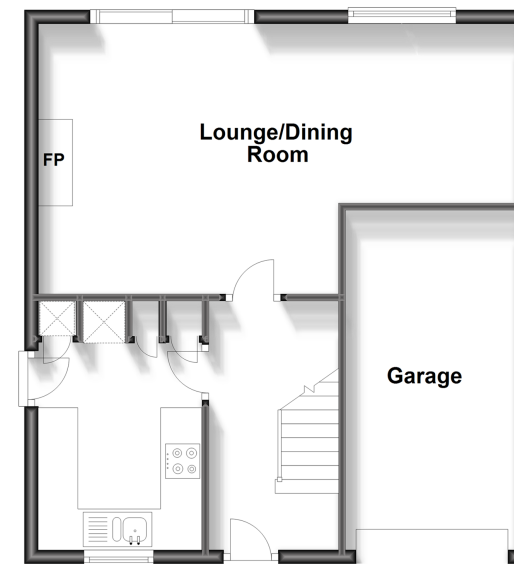
Driveway

Garage

Rear Garden

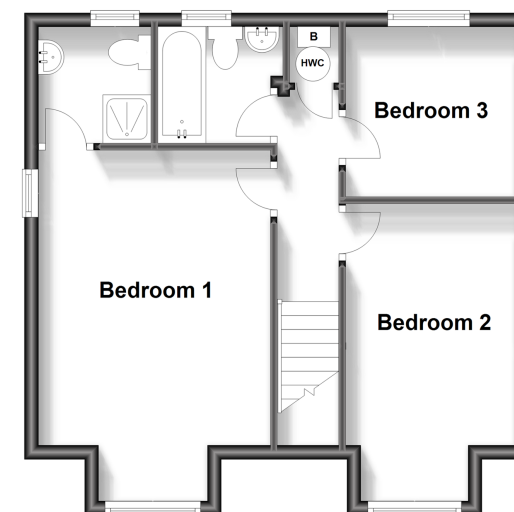
Ground Floor

Approx. 52.8 sq. metres (568.8 sq. feet)



First Floor

Approx. 44.6 sq. metres (480.0 sq. feet)



Call Ashington - 01903 891444 ■ cubittandwest.co.uk

- Legal advice should be taken to verify fixtures/fittings, planning, alterations and/or lease details
- Appliances & services are untested, dimensions are approximate and floor plans are not to scale
- Through a Homewise Home For Life Plan people aged 60+ can secure this property for up to 59% less, by purchasing a Lifetime Lease.



23603541/20231024/CR/HM1