



Price
£775,000

Freehold

5x  3x  3x 

**Meiros Way, Ashington,
West Sussex, RH20**

OVER 60?

Secure this property
for up to **59% less!**

cubitt&west
Helping you move forwards

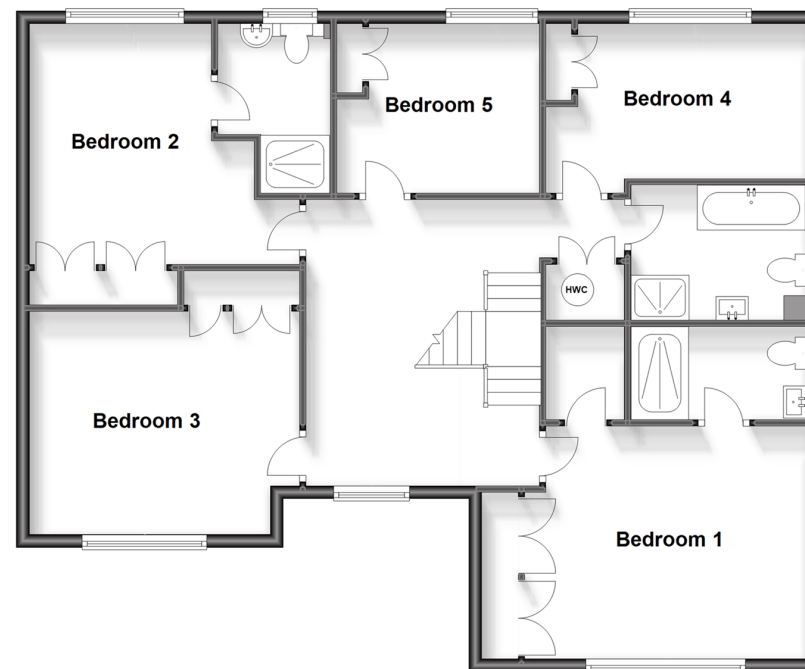
Ground Floor

Approx. 122.1 sq. metres (1314.2 sq. feet)



First Floor

Approx. 103.6 sq. metres (1115.2 sq. feet)



Accommodation

GROUND FLOOR

Entrance Hall
Cloakroom
Study: 11'7 x 9'1 (3.53m x 2.77m)
Lounge: 18'6 x 11'6 (5.64m x 3.51m)
Kitchen/Dining Room
Kitchen Area: 16'0 x 10'1 (4.88m x 3.08m)
Dining Area: 14'4 x 10'4 (4.37m x 3.15m)
Conservatory: 13'4 x 9'3 (4.07m x 2.82m)
Utility: 8'1 x 5'3 (2.47m x 1.60m)

FIRST FLOOR

Galleried Landing
Family Bathroom
Bedroom 1: 14'9 up to fitted wardrobes x 11'5 (4.50m x 3.48m)
En-suite Shower Room
Bedroom 2: 12'7 x 9'3 up to fitted wardrobes (3.84m x 2.82m)
En-suite Shower Room
Bedroom 3: 13'9 x 11'3 up to fitted wardrobes (4.19m x 3.43m)

Bedroom 4: 12'7 up to fitted wardrobes x 8'11 (3.84m x 2.72m)

Bedroom 5: 10'8 into fitted wardrobes x 8'9 (3.25m x 2.67m)

OUTSIDE

Front Garden
Driveway
Double Garage
Rear Garden



Main features

- Substantial detached house built by David Wilson Homes in a quiet location
- En-suite shower rooms to two bedrooms
- Large kitchen/dining room perfect for entertaining and family life
- Double garage and driveway
- Low maintenance family friendly rear garden



Nearest Schools

Primary Schools: Ashington C of E School 0.5 miles,
Secondary Schools: Lower School, Rock Road site 4.1 miles, Upper School, Shooting Field site 5.6 miles



Transport Information

Train Stations: Pulborough 5.3 miles, Billingshurst 6.0 miles, Amberley 6.9 miles



Address

Meiros Way, Ashington, West Sussex, RH20



Directions

For directions to this property please contact us.



cubitt&west
Helping you move forwards

Call Ashington Branch 01903 891444 ■ cubittandwest.co.uk



- The seller is a person connected with Cubitt & West as defined in the Estate Agents Act 1979
- Appliances & services are untested, dimensions are approximate and floor plans are not to scale

- Legal advice should be taken to verify fixtures/fittings, planning, alterations and/or lease details
- Through a Homewise Home For Life Plan people aged 60+ can secure this property for up to 59% less, by purchasing a Lifetime Lease.

