



OVER 60?

Secure this property
for up to **59% less!**

Price

£385,000

Freehold

3x  2x  1x 

**Montpelier Gardens,
Washington,
Pulborough, West
Sussex, RH20**

cubitt & west
Helping you move forwards



Main features

- Charming house in a semi-rural location
- Updated and improved with new windows, boiler, refitted kitchen/dining room and en suite
- Secluded landscaped rear garden
- Large detached workshop. Parking
- Easy access to A24 and countryside

Accommodation

GROUND FLOOR

Entrance Hall

Lounge: 14'0 x 12'7 (4.27m x 3.84m)

Kitchen/Dining Room: 16'7 x 6'9 (5.06m x 2.06m)

Side Porch/Utility Room

Bathroom

FIRST FLOOR

Landing

Bedroom 1: 14'1 x 10'2 up to fitted wardrobes (4.30m x 3.10m)

En suite Shower

Bedroom 2: 9'8 x 9'7 (2.95m x 2.92m)

Bedroom 3: 7'0 x 6'9 (2.14m x 2.06m)

OUTSIDE

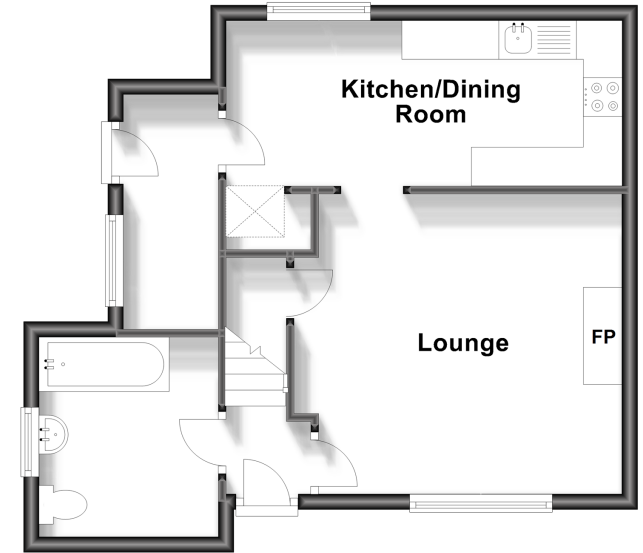
Rear Garden

Workshop

Off Road Parking

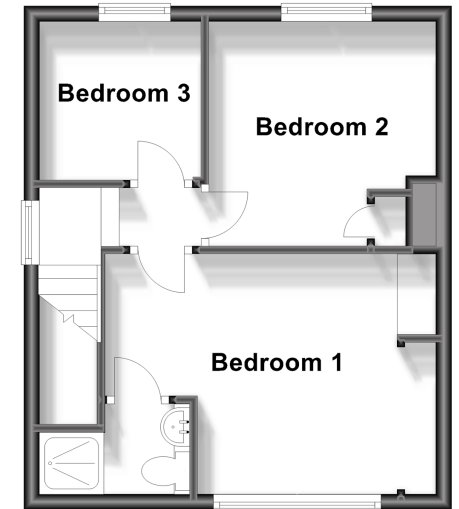
Ground Floor

Approx. 41.5 sq. metres (446.5 sq. feet)



First Floor

Approx. 31.2 sq. metres (335.6 sq. feet)



Call Ashington - 01903 891444 ■ cubittandwest.co.uk

- Legal advice should be taken to verify fixtures/fittings, planning, alterations and/or lease details
- Appliances & services are untested, dimensions are approximate and floor plans are not to scale
- Through a Homewise Home For Life Plan people aged 60+ can secure this property for up to 59% less, by purchasing a Lifetime Lease.



23603546/20240213/CNW/HM1