



**Price**

**£440,000**

**Freehold**

3x  2x  1x 

**St. Mary's Close,  
Thakeham, West Sussex,  
RH20**

**OVER 60?**

Secure this property  
for up to **59% less!**

**cubitt&west**  
Helping you move forwards



## Main features

- Attractive Sussex Flint front house in cul de sac close to countryside and schools
- Built by Croudace Homes in 2014
- Small development of prestigious homes in a non-estate position
- Garage and driveway
- No chain

## Accommodation

### GROUND FLOOR

Hall

Cloakroom

Kitchen/Dining Room: 15'7 x 11'8 (4.75m x 3.56m)

Lounge: 15'6 x 10'5 (4.73m x 3.18m)

### FIRST FLOOR

Landing

Bathroom

Bedroom 1: 16'2 maximum x 9'2 up to fitted wardrobes (4.93m x 2.80m)

En suite Shower Room

Bedroom 2: 10'8 x 9'0 (3.25m x 2.75m)

Bedroom 3: 10'8 x 6'3 (3.25m x 1.91m)

### OUTSIDE

Front Garden

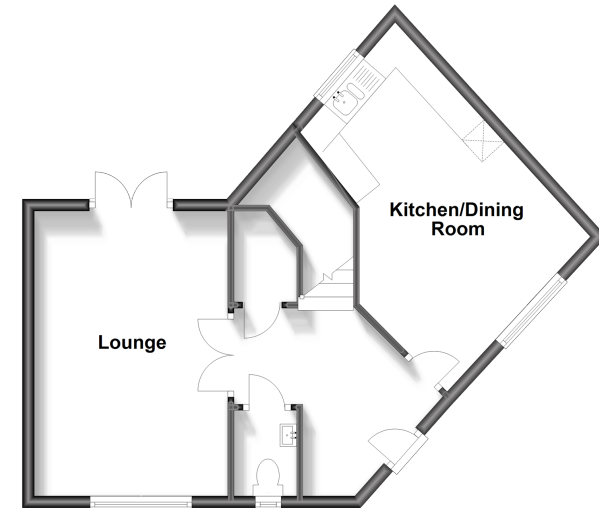
Detached Garage

Driveway

Rear Garden

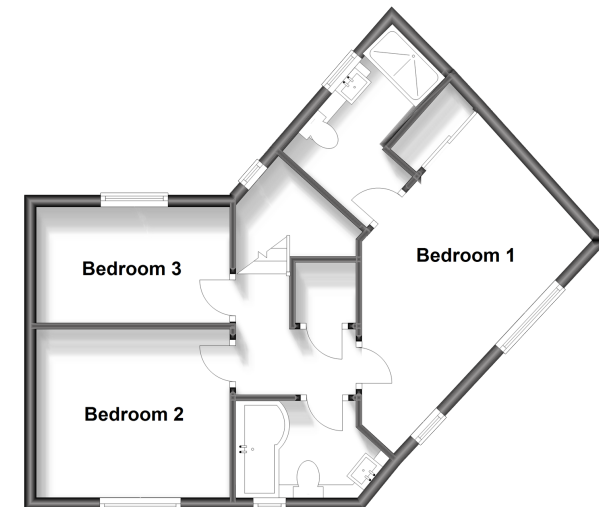
### Ground Floor

Approx. 44.4 sq. metres (477.5 sq. feet)



### First Floor

Approx. 44.9 sq. metres (483.0 sq. feet)



**Call Ashington - 01903 891444 ■ [cubittandwest.co.uk](http://cubittandwest.co.uk)**

- Legal advice should be taken to verify fixtures/fittings, planning, alterations and/or lease details
- Appliances & services are untested, dimensions are approximate and floor plans are not to scale
- Through a Homewise Home For Life Plan people aged 60+ can secure this property for up to 59% less, by purchasing a Lifetime Lease.



23603551/20240212/CR/HM1