



Guide Price
£360,000

Freehold

3x  1x  1x 

**Mill Lane, Ashington,
West Sussex, RH20**

cubitt&west
Helping you move forwards



Main features

- Family home in a popular location
- Gas central heating, double glazing
- Modern kitchen and shower room
- No Chain.
- Garage and plenty of parking

Accommodation

GROUND FLOOR

Entrance Hall

Kitchen: 8'9 x 7'9 (2.67m x 2.36m)

Lounge Area: 14'9 x 12'9 (4.50m x 3.89m)

Dining Area: 9'4 x 7'9 (2.85m x 2.36m)

FIRST FLOOR

Landing

Shower Room

Bedroom 1: 12'2 x 9'1 into fitted wardrobes (3.71m x 2.77m)

Bedroom 2: 11'8 x 9'1 into fitted wardrobes (3.56m x 2.77m)

Bedroom 3: 9'1 x 6'7 (2.77m x 2.01m)

OUTSIDE

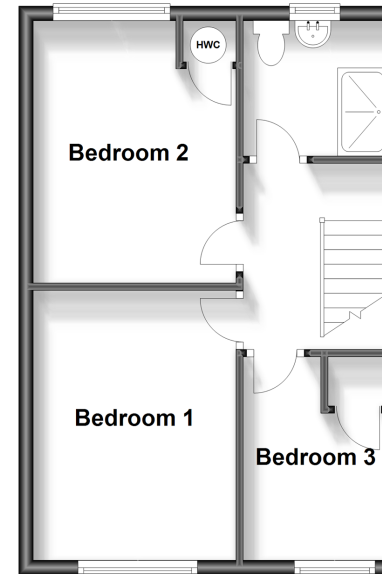
Rear Garden

Garage

Driveway

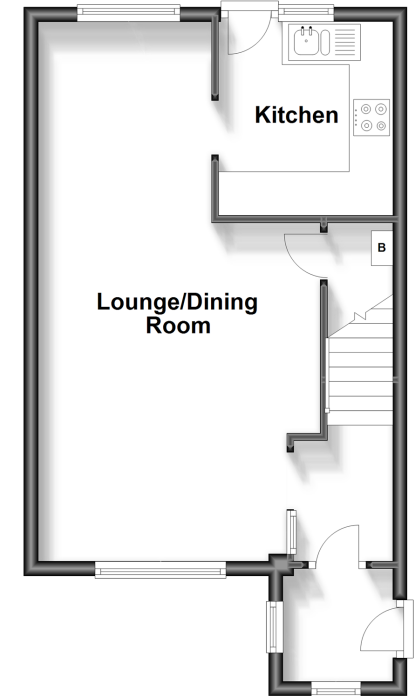
First Floor

Approx. 36.7 sq. metres (394.8 sq. feet)



Ground Floor

Approx. 39.2 sq. metres (421.9 sq. feet)



Call Ashington - 01903 891444 ■ cubittandwest.co.uk

- Legal advice should be taken to verify fixtures/fittings, planning, alterations and/or lease details
- Appliances & services are untested, dimensions are approximate and floor plans are not to scale



23603554/20240213/CNW/HM1