



Price

£102,500

Leasehold

3x  1x  1x 

**Leatherbottle Way,
Storrington,
Pulborough, West
Sussex, RH20**

cubitt&west
Helping you move forwards



Main features

- 25% share available to buy for £102,500 plus rent of £878.84pcm
- Qualifying criteria apply
- Three good sized bedrooms
- Allocated parking plus secluded rear garden
- Well presented end of terrace family home in a popular location close to schools and park

Accommodation

GROUND FLOOR

Hall
Cloakroom
Kitchen: 9'5 x 9'5 (2.87m x 2.87m)
Lounge/Dining Room: 17'2 x 13'7 (5.24m x 4.14m)

FIRST FLOOR

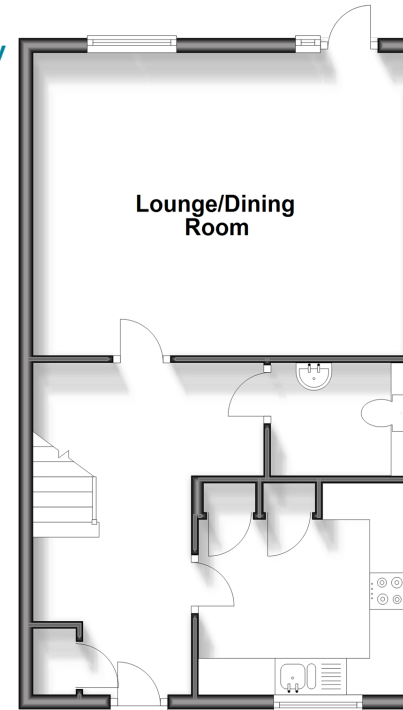
Landing
Bedroom 1: 16'3 x 9'7 (4.96m x 2.92m)
Bedroom 2: 12'3 x 9'7 (3.74m x 2.92m)
Bedroom 3: 12'6 x 7'1 (3.81m x 2.16m)
Bathroom

OUTSIDE

Rear Garden
Allocated Parking

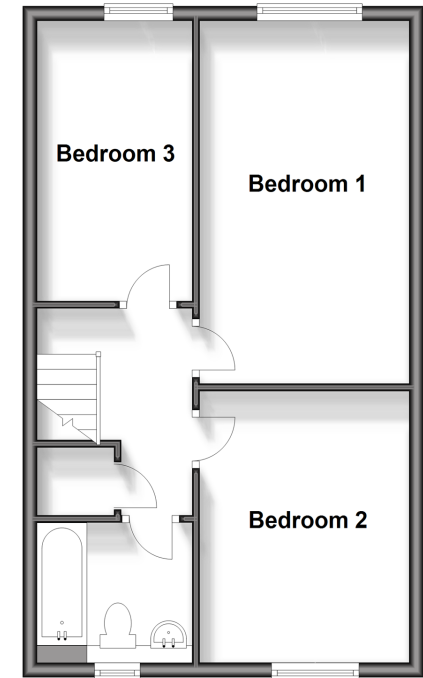
Ground Floor

Approx. 45.9 sq. metres (494.3 sq. feet)



First Floor

Approx. 45.9 sq. metres (494.3 sq. feet)



Call Ashington - 01903 891444 ■ cubittandwest.co.uk

- Legal advice should be taken to verify fixtures/fittings, planning, alterations and/or lease details
- Appliances & services are untested, dimensions are approximate and floor plans are not to scale



23603556/20240120/CR/HM1