



**OVER 60?**

Secure this property  
for up to **59% less!**

**Price**

**£450,000**

**Freehold**

2x  1x  2x 

**Windmill Close,  
Ashington, West Sussex,  
RH20**

**cubitt&west**  
Helping you move forwards





## Main features

- Spacious semi-detached bungalow
- Quiet cul de sac close to village amenities and bus stop
- Two double bedrooms
- Lounge area with vaulted ceiling
- Beautiful triple aspect garden room
- Stunning secluded rear garden ideal for sun lovers or relax in the tranquil surroundings

## Accommodation

### GROUND FLOOR

Hall

Kitchen area: 15'8 x 10'2 (4.78m x 3.10m)

Lounge area: 15'6 x 11'6 (4.73m x 3.51m)

Dining Room/Orangery: 21'5 x 8'8 (6.53m x 2.64m)

Inner Hall

Bathroom

Shower

Bedroom 1: 11'6 x 10'0 up to fitted wardrobes (3.51m x 3.05m)

Bedroom 2: 12'9 x 10'4 (3.89m x 3.15m)

### OUTSIDE

Front Garden

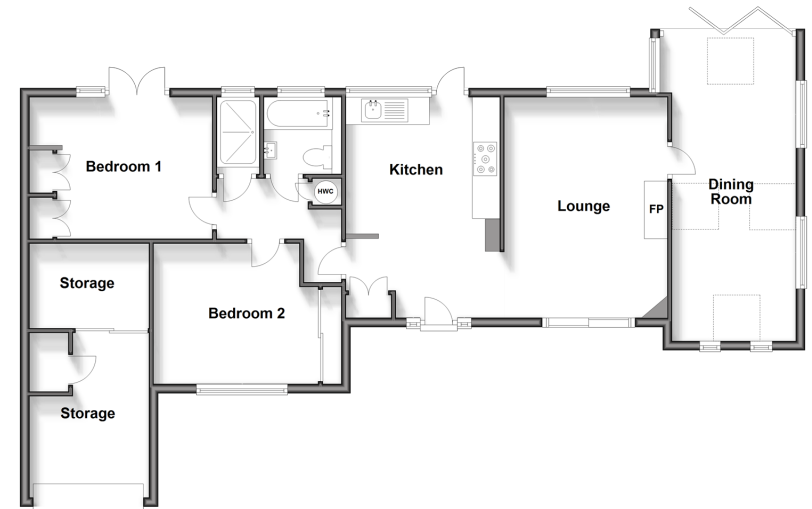
Rear Garden

Cabin

Driveway

Garage

Ground Floor  
Approx. 100.2 sq. metres (1078.6 sq. feet)



**Call Ashington - 01903 891444 ■ [cubittandwest.co.uk](http://cubittandwest.co.uk)**

- Legal advice should be taken to verify fixtures/fittings, planning, alterations and/or lease details
- Appliances & services are untested, dimensions are approximate and floor plans are not to scale
- Through a Homewise Home For Life Plan people aged 60+ can secure this property for up to 59% less, by purchasing a Lifetime Lease.



23603560/20231208/CR/HM1