



Price

£450,000

Freehold

3x  2x  1x 

**Maple Gardens, Old
London Road,
Washington, West
Sussex, RH20**

cubitt&west
Helping you move forwards



Main features

- **New build semi-detached house**
- **Non estate position within easy reach of scenic National Trust land and the A24**
- **Exceptional specification, underfloor heating, bifold doors, EVC port**
- **Driveway and landscaped rear garden**
- **10 year ICW Structural Warranty**

Accommodation

GROUND FLOOR

Hall
Cloakroom
Kitchen/Breakfast Room: 14'7 x 10'1 (4.45m x 3.08m)
Lounge/Dining Room: 19'4 x 17'4 (5.90m x 5.29m)

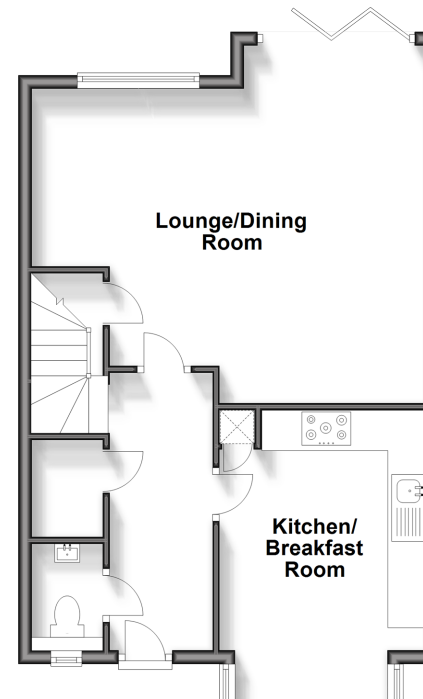
FIRST FLOOR

Landing
Bathroom
Bedroom 1: 11'4 x 11'2 (3.46m x 3.41m)
En suite Shower Room
Bedroom 2: 10'8 x 8'2 (3.25m x 2.49m)
Bedroom 3: 10'3 x 8'2 (3.13m x 2.49m)
Study: 7'7 x 6'8 (2.31m x 2.03m)

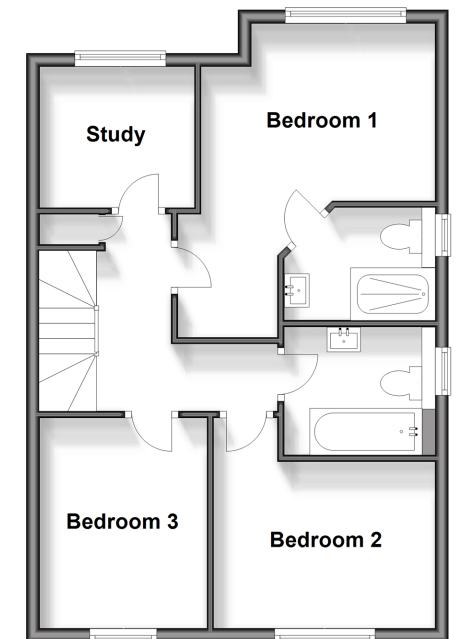
OUTSIDE

Front Garden
Rear Garden
Driveway for 2 cars

Ground Floor
Approx. 53.6 sq. metres (577.3 sq. feet)



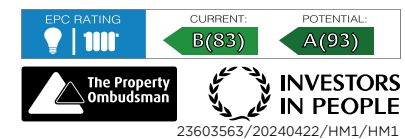
First Floor
Approx. 51.6 sq. metres (555.3 sq. feet)



Call Ashington - 01903 891444 ■ cubittandwest.co.uk

■ Legal advice should be taken to verify fixtures/fittings, planning, alterations and/or lease details

■ Appliances & services are untested, dimensions are approximate and floor plans are not to scale



23603563/20240422/HM1/HM1