



**Price**

**£625,000**

**Freehold**

3x  2x  1x 

**Chestnut Drive,  
Thakeham, Pulborough,  
West Sussex, RH20**

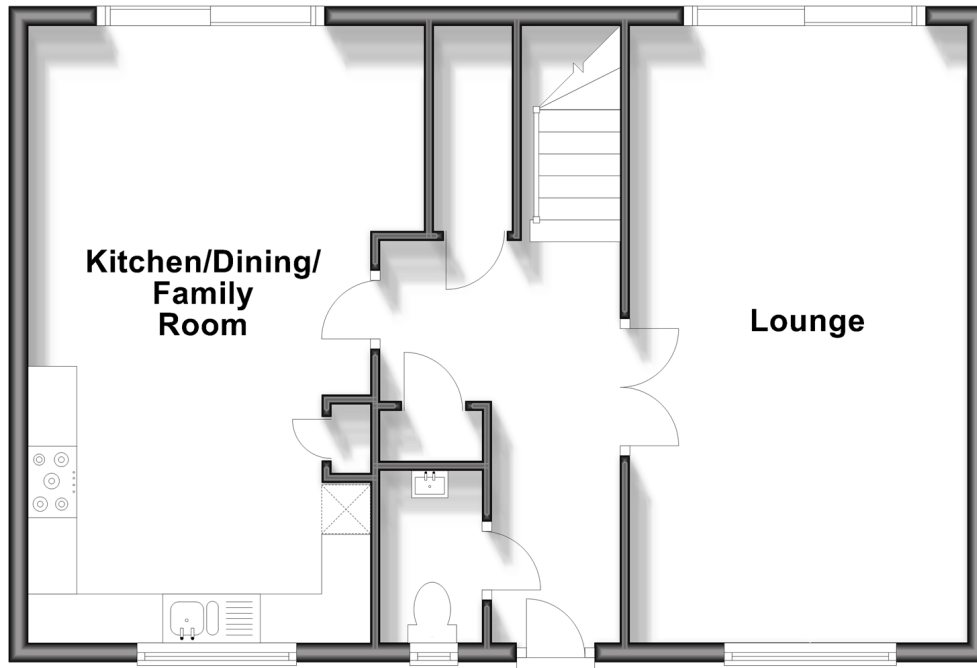
**OVER 60?**

Secure this property  
for up to **59% less!**

**cubitt&west**  
Helping you move forwards

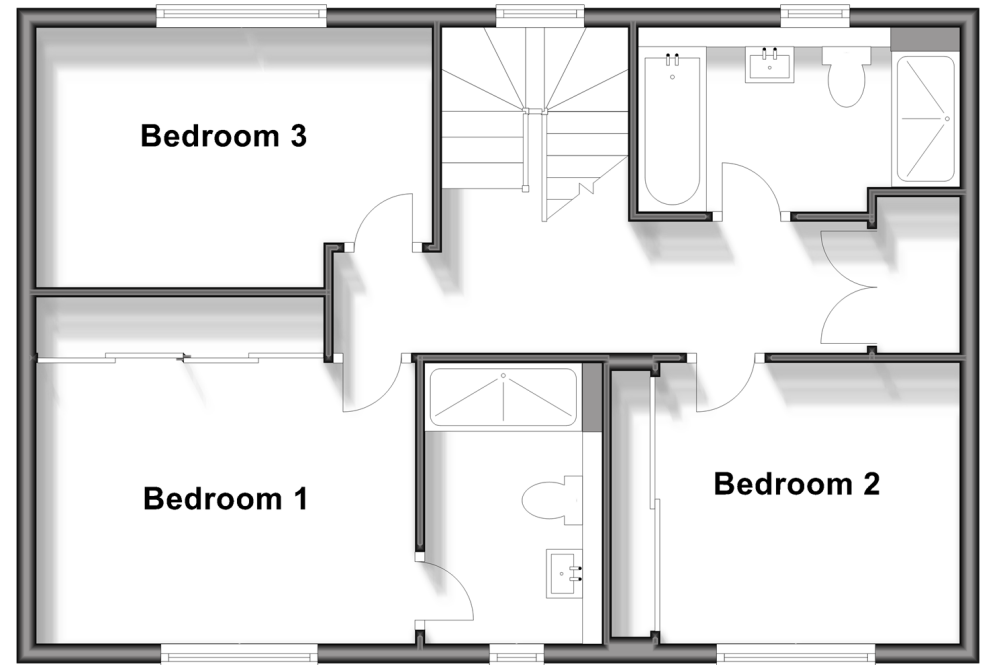
## Ground Floor

Approx. 60.9 sq. metres (655.8 sq. feet)



## First Floor

Approx. 59.9 sq. metres (644.9 sq. feet)



## Accommodation

### GROUND FLOOR

Hall  
Cloakroom  
Lounge: 20'7 x 11'3 (6.28m x 3.43m)  
Kitchen/Dining/Family Room: 20'7 x 13'3 (6.28m x 4.04m)

### FIRST FLOOR

Landing  
Family Bathroom  
Bedroom 1: 13'4 x 9'5 up to fitted wardrobes (4.07m x 2.87m)  
En suite Shower  
Bedroom 2: 9'4 x 9'4 up to fitted wardrobes (2.85m x 2.85m)  
Bedroom 3: 13'4 x 8'7 (4.07m x 2.62m)

### OUTSIDE

Front Garden  
Driveway  
Rear Garden





## Main features

- Beautifully presented detached house built in 2021
- Larger than average plot with sunny aspect rear garden and long driveway
- Three double bedrooms and plenty of wardrobes
- Impressive 20'7 kitchen/dining/family room
- Dual aspect lounge with large doors opening onto the fabulous rear garden. No chain



### Nearest Schools

Primary School: Thakeham Primary School 1.2 miles

Secondary School: Steyning Grammar School; Lower School, Rock Road site 1.3 miles, Upper School, Shooting Field site 7.9 miles



### Transport Information

Train Stations: Pulborough 3.7 miles, Billingshurst 5.3 miles, Amberley 5.6 miles



### Address

Chestnut Drive, Thakeham, Pulborough, West Sussex, RH20



### Directions

For directions to this property please contact us.





**cubitt&west**  
Helping you move forwards

Call Ashington Branch 01903 891444 ■ [cubittandwest.co.uk](https://cubittandwest.co.uk)



■ Legal advice should be taken to verify fixtures/fittings, planning, alterations and/or lease details ■ Appliances & services are untested, dimensions are approximate and floor plans are not to scale  
■ Through a Homewise Home For Life Plan people aged 60+ can secure this property for up to 59% less, by purchasing a Lifetime Lease.



23603569/20240210/CR/HM1