



Price

£210,000

Leasehold

2x  1x  1x 

**Mousdell Close,
Ashington, West Sussex,
RH20**

cubitt&west
Helping you move forwards



Main features

- **Bright and spacious first floor maisonette**
- **£210,000 for a 75% share. No rent to pay on remaining 25%.**
- **Qualifying criteria applies**
- **25% held on a Second Charge by Landspeed**
- **Two good sized bedrooms, large bright lounge/dining area**

Accommodation

GROUND FLOOR

Entrance Hall

FIRST FLOOR

Landing

Lounge/Dining area: 15'1 x 11'1
(4.60m x 3.38m)

Kitchen: 8'3 x 8'0 (2.52m x 2.44m)

Bedroom 1: 13'6 x 9'5 up to fitted wardrobes (4.12m x 2.87m)

Bedroom 2: 13'6 x 7'2 into fitted wardrobes (4.12m x 2.19m)

Bathroom

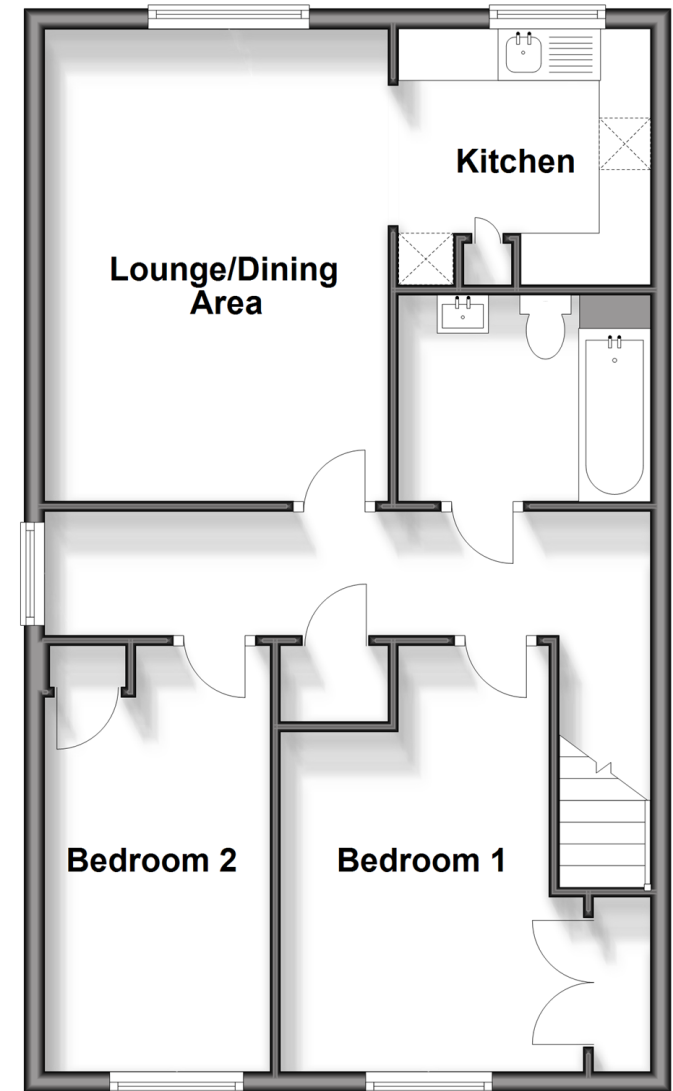
OUTSIDE

Allocated Parking

Communal Garden

First Floor

Approx. 59.8 sq. metres (643.4 sq. feet)



Call Ashington - 01903 891444 ■ cubittandwest.co.uk

- Legal advice should be taken to verify fixtures/fittings, planning, alterations and/or lease details
- Appliances & services are untested, dimensions are approximate and floor plans are not to scale



23603581/20240415/CR/HM1