



Price
£370,000

Freehold

2x  2x  1x 

**John Ireland Way,
Washington, West
Sussex, RH20**

cubitt&west
Helping you move forwards



Main features

- Bright and airy mid terrace house built in 2016 by David Wilson Homes
- Two good sized bedrooms one with en suite shower,, Gas central heating, double glazing
- Sought after Milford Grange location
- Easy access to beautiful countryside walks
- Secluded garden, garage to the rear.

Accommodation

GROUND FLOOR

Entrance Hall

Cloakroom

Lounge: 16'4 x 12'2 (4.98m x 3.71m)

Kitchen/Dining Room: 15'5 x 8'4 (4.70m x 2.54m)

FIRST FLOOR

Landing

Family Bathroom

Bedroom 1: 10'6 up to fitted cupboard x 10'5 (3.20m x 3.18m)

En suite Shower Room

Bedroom 2: 15'6 x 9'2 into fitted cupboard (4.73m x 2.80m)

OUTSIDE

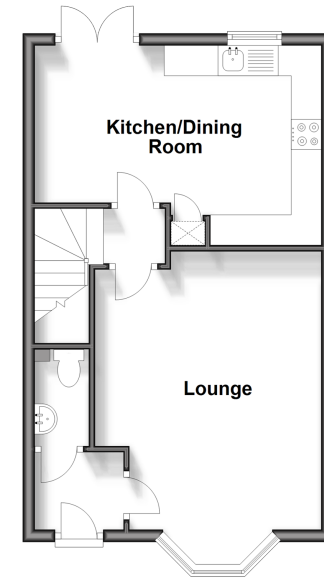
Front Garden

Rear Garden

Garage

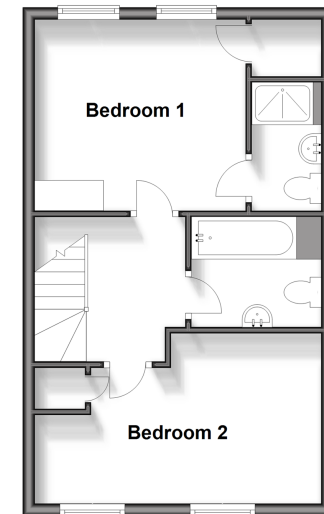
Ground Floor

Approx. 38.4 sq. metres (412.9 sq. feet)



First Floor

Approx. 38.2 sq. metres (410.7 sq. feet)



Call Ashington - 01903 891444 ■ cubittandwest.co.uk

- Legal advice should be taken to verify fixtures/fittings, planning, alterations and/or lease details
- Appliances & services are untested, dimensions are approximate and floor plans are not to scale



23603584/20240413/HM1/HM1